

Cav alpha 2/delta 3 antibody

Cat. No. GTX16618

| | |
|---------------------|-------------------------|
| Host | Rabbit |
| Clonality | Polyclonal |
| Isotype | IgG |
| Applications | WB, ICC/IF, IHC-Fr, LCI |
| Reactivity | Human, Mouse, Rat |

References (1)

Package

50 µl

Applications

Application Note

*Optimal dilutions/concentrations should be determined by the researcher.

| Suggested dilution | Recommended dilution |
|--------------------|----------------------|
| WB | Assay dependent |
| ICC/IF | Assay dependent |
| IHC-Fr | Assay dependent |
| LCI | Assay dependent |

Not tested in other applications.

Calculated MW 122 kDa. ([Note](#))

Properties

| | |
|----------------------|--|
| Form | Liquid |
| Buffer | PBS, 1% BSA |
| Preservative | 0.05% Sodium azide |
| Storage | Store as concentrated solution. Centrifuge briefly prior to opening vial. For short-term storage (1-2 weeks), store at 4°C. For long-term storage, aliquot and store at -20°C or below. Avoid multiple freeze-thaw cycles. |
| Concentration | 0.8 mg/ml (Please refer to the vial label for the specific concentration.) |
| Immunogen | Peptide CSWWHSDMTAKAQK, corresponding to amino acid residues 942-955 (Extracellular) of rat CaVα2δ3 (Accession : Q8CFG5). |
| Purification | Purified by antigen-affinity chromatography |
| Conjugation | Unconjugated |

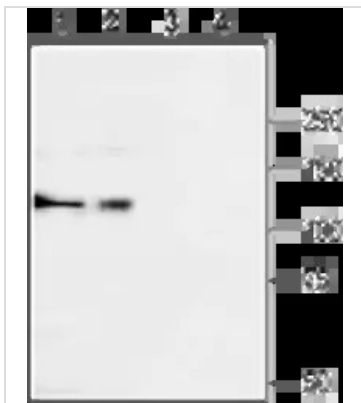


For full product information, images and publications, please visit our [website](#).

For laboratory research use only. Not for any clinical, therapeutic, or diagnostic use in humans or animals. Not for animal or human consumption.

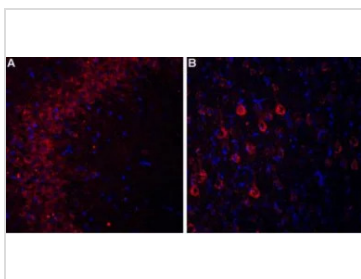
Note

Purchasers shall not, and agree not to enable third parties to, analyze, copy, reverse engineer or otherwise attempt to determine the structure or sequence of the product.

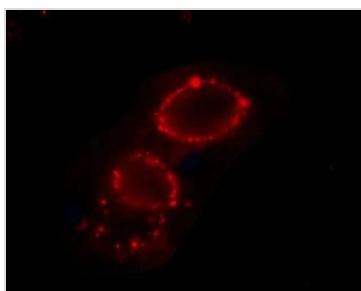
DATA IMAGES

GTX16618 WB Image

WB analysis of rat brain (lanes 1 and 3) and K562 (lanes 2 and 4) lysates using GTX16618 Cav alpha 2/delta 3 antibody preincubated with or without immunogen peptide.

Dilution : 1:200


GTX16618 IHC-Fr Image

IHC-Fr analysis of rat hippocampus and cortex tissue using GTX16618 Cav alpha 2/delta 3 antibody. In both areas CaV α 2 δ 3 staining (red) appears in pyramidal neurons (arrow). DAPI is used as the counterstain (blue).


GTX16618 LCI Image

Live cell imaging analysis of intact living PC12 cells using GTX16618 Cav alpha 2/delta 3 antibody.

Dilution : 1:25



For full product information, images and publications, please visit our [website](#).