

CACNA2D4 antibody

Cat. No. GTX16619

Host	Rabbit
Clonality	Polyclonal
Isotype	IgG
Applications	WB, ICC/IF, IHC-Fr, LCI
Reactivity	Mouse, Rat

Package
50 µl

Applications

Application Note

*Optimal dilutions/concentrations should be determined by the researcher.

Suggested dilution	Recommended dilution
WB	Assay dependent
ICC/IF	Assay dependent
IHC-Fr	Assay dependent
LCI	Assay dependent

Not tested in other applications.

Calculated MW 126 kDa. ([Note](#))

Product Note We do not recommend use of this product for Human samples.

Properties

Form	Liquid
Buffer	PBS, 1% BSA
Preservative	0.05% Sodium azide
Storage	Store as concentrated solution. Centrifuge briefly prior to opening vial. For short-term storage (1-2 weeks), store at 4°C. For long-term storage, aliquot and store at -20°C or below. Avoid multiple freeze-thaw cycles.
Concentration	0.8 mg/ml (Please refer to the vial label for the specific concentration.)
Immunogen	Peptide (C)SERPQEMGRLLGEADG, corresponding to amino acid residues 881-896 (Extracellular) of mouse CaVα2δ4 (Accession : Q5RJF7).
Purification	Purified by antigen-affinity chromatography
Conjugation	Unconjugated



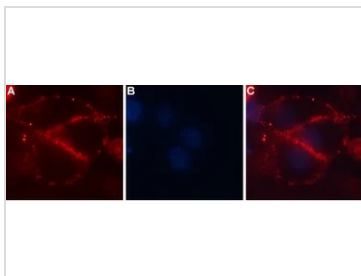
For full product information, images and publications, please visit our [website](#).

For laboratory research use only. Not for any clinical, therapeutic, or diagnostic use in humans or animals. Not for animal or human consumption.

Note

Purchasers shall not, and agree not to enable third parties to, analyze, copy, reverse engineer or otherwise attempt to determine the structure or sequence of the product.

DATA IMAGES

**GTX16619 LCI Image**

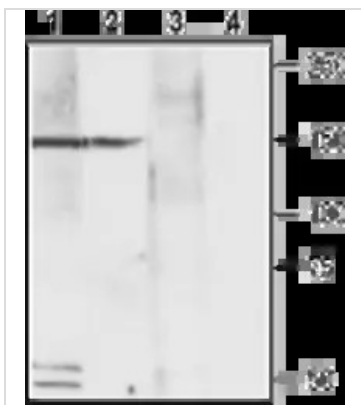
Live cell imaging analysis of intact living C6 cells using GTX16619 CACNA2D4 antibody.

Panel A : Primary antibody (red)

Panel B : Hoechst 33342 for nuclear staining (blue)

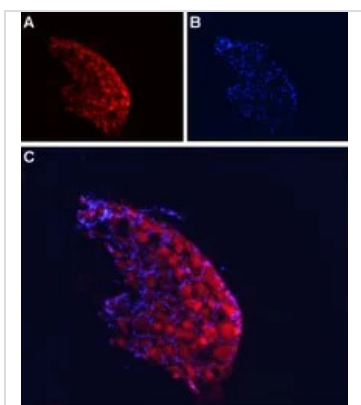
Panel C : Merged images of Panel A and B

Dilution : 1:50

**GTX16619 WB Image**

WB analysis of rat DRG (lanes 1 and 3) and PC12 cells (lanes 2 and 4) lysates using GTX16619 CACNA2D4 antibody preincubated with or without immunogen peptide.

Dilution : 1:200

**GTX16619 IHC-Fr Image**

IHC-Fr analysis of rat DRG tissue using GTX16619 CACNA2D4 antibody.

Panel A : CaVα2δ4 is expressed in DRG neurons.

Panel B : Nuclear staining using Hoechst 33342

Panel C : Merged images of A and B.

Dilution : 1:100



For full product information, images and publications, please visit our [website](#).