

Cav gamma 5 antibody

Cat. No. GTX16626

Host	Rabbit
Clonality	Polyclonal
Isotype	IgG
Applications	WB, ICC/IF, LCI
Reactivity	Human, Mouse, Rat

Package

50 µl

Applications

Application Note

*Optimal dilutions/concentrations should be determined by the researcher.

Suggested dilution	Recommended dilution
WB	Assay dependent
ICC/IF	Assay dependent
LCI	Assay dependent

Not tested in other applications.

Calculated MW 31 kDa. ([Note](#))

Properties

Form	Liquid
Buffer	PBS, 1% BSA
Preservative	0.05% Sodium azide
Storage	Store as concentrated solution. Centrifuge briefly prior to opening vial. For short-term storage (1-2 weeks), store at 4°C. For long-term storage, aliquot and store at -20°C or below. Avoid multiple freeze-thaw cycles.
Concentration	0.8 mg/ml (Please refer to the vial label for the specific concentration.)
Immunogen	Peptide (C)SESTVNVLMIRS, corresponding to amino acid residues 87-99 (1st extracellular loop) of rat CACNG5 (Accession : Q8VHW8).
Purification	Purified by antigen-affinity chromatography
Conjugation	Unconjugated

Note

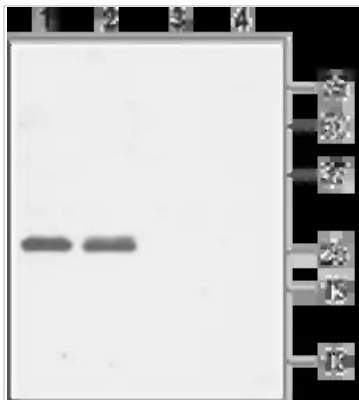
For laboratory research use only. Not for any clinical, therapeutic, or diagnostic use in humans or animals. Not for animal or human consumption.

Purchasers shall not, and agree not to enable third parties to, analyze, copy, reverse engineer or otherwise attempt to determine the structure or sequence of the product.



For full product information, images and publications, please visit our [website](#).

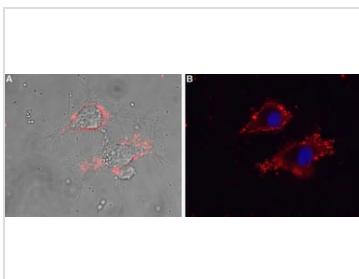
DATA IMAGES



GTX16626 WB Image

WB analysis of rat (lanes 1 and 3) and mouse (lanes 2 and 4) brain lysates using GTX16626 Cav gamma 5 antibody preincubated with or without immunogen peptide.

Dilution : 1:1000



GTX16626 LCI Image

Live cell imaging analysis of intact living PC12 cells using GTX16626 Cav gamma 5 antibody.

Red : Primary antibody

Blue : DAPI for nuclear staining

Dilution : 1:25



For full product information, images and publications, please visit our [website](https://www.genetex.com).