

TRPC4 antibody

Cat. No. GTX16627

Host	Rabbit
Clonality	Polyclonal
Isotype	IgG
Applications	WB, ICC/IF, IHC-Fr, LCI
Reactivity	Human, Mouse, Rat

Package

50 µl

Applications

Application Note

*Optimal dilutions/concentrations should be determined by the researcher.

Suggested dilution	Recommended dilution
WB	Assay dependent
ICC/IF	Assay dependent
IHC-Fr	Assay dependent
LCI	Assay dependent

Not tested in other applications.

Properties

Form	Liquid
Buffer	PBS, 1% BSA
Preservative	0.05% Sodium azide
Storage	Store as concentrated solution. Centrifuge briefly prior to opening vial. For short-term storage (1-2 weeks), store at 4°C. For long-term storage, aliquot and store at -20°C or below. Avoid multiple freeze-thaw cycles.
Concentration	0.85 mg/ml (Please refer to the vial label for the specific concentration.)
Immunogen	Peptide (C)KYSALNPRESWD, corresponding to amino acid residues 458-469 (2nd extracellular loop) of rat TRPC4 (Accession : O35119).
Purification	Purified by antigen-affinity chromatography
Conjugation	Unconjugated

Note

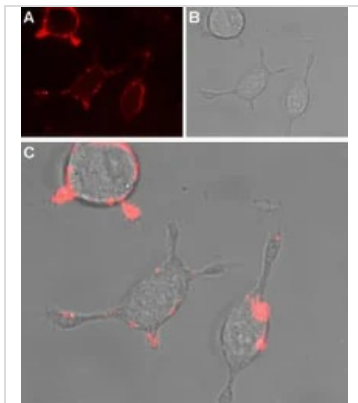
For laboratory research use only. Not for any clinical, therapeutic, or diagnostic use in humans or animals. Not for animal or human consumption.

Purchasers shall not, and agree not to enable third parties to, analyze, copy, reverse engineer or otherwise attempt to determine the structure or sequence of the product.



For full product information, images and publications, please visit our [website](#).

DATA IMAGES



GTX16627 LCI Image

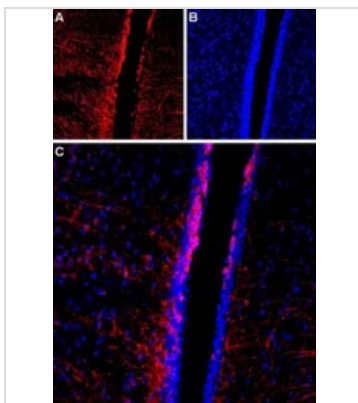
Live cell imaging analysis of intact living PC12 cells using GTX16627 TRPC4 antibody.

Panel A : Primary antibody (red)

Panel B : Live view of the cell

Panel C : Merged images of Panel A and B

Dilution : 1:50



GTX16627 IHC-Fr Image

IHC-Fr analysis of rat brain tissue using GTX16627 TRPC4 antibody.

Panel A : TRPC4 (red) is detected along the wall of the third ventricle (horizontal arrow) and astrocytic fibers extending from the wall (vertical arrow).

Panel B : Nucleus staining using DAPI as the counterstain (blue).

Panel C : Merge images of A and B.



GTX16627 WB Image

WB analysis of rat and mouse brain lysates using GTX16627 TRPC4 antibody preincubated with or without immunogen peptide.

Dilution : 1:200



For full product information, images and publications, please visit our [website](https://www.genetex.com).