

Cav1.3 antibody

Cat. No. GTX16633

Host	Rabbit
Clonality	Polyclonal
Isotype	IgG
Applications	WB, ICC/IF, IHC-Fr, LCI
Reactivity	Human, Mouse, Rat

Package
50 µl

Applications

Application Note

*Optimal dilutions/concentrations should be determined by the researcher.

Suggested dilution	Recommended dilution
WB	Assay dependent
ICC/IF	Assay dependent
IHC-Fr	Assay dependent
LCI	Assay dependent

Not tested in other applications.

Calculated MW 250 kDa. ([Note](#))

Properties

Form	Liquid
Buffer	PBS, 1% BSA
Preservative	0.05% Sodium azide
Storage	Store as concentrated solution. Centrifuge briefly prior to opening vial. For short-term storage (1-2 weeks), store at 4°C. For long-term storage, aliquot and store at -20°C or below. Avoid multiple freeze-thaw cycles.
Concentration	0.9 mg/ml (Please refer to the vial label for the specific concentration.)
Immunogen	Peptide (C)EQLTKETEGGNHS, corresponding to amino acid residues 215-227 (2nd extracellular loop, repeat I) of rat Cav1.3 (Accession : P27732).
Purification	Purified by antigen-affinity chromatography
Conjugation	Unconjugated



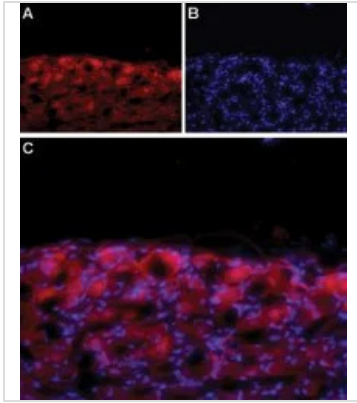
For full product information, images and publications, please visit our [website](#).

For laboratory research use only. Not for any clinical, therapeutic, or diagnostic use in humans or animals. Not for animal or human consumption.

Note

Purchasers shall not, and agree not to enable third parties to, analyze, copy, reverse engineer or otherwise attempt to determine the structure or sequence of the product.

DATA IMAGES

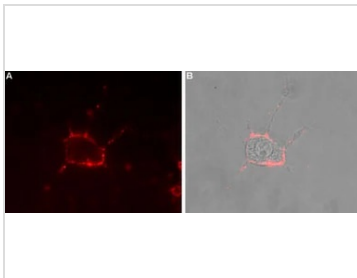
**GTX16633 IHC-Fr Image**

IHC-Fr analysis of rat DRG tissue using GTX16633 Cav1.3 antibody.

Panel A : CaV1.3 labeling (red) appears in the cell bodies of the DRG.

Panel B : Nuclear staining using DAPI as the counterstain.

Panel C : Merged image of A and B.

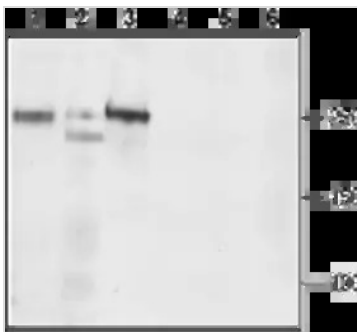
**GTX16633 LCI Image**

Live cell imaging analysis of intact living PC12 cells using GTX16633 Cav1.3 antibody.

Panel A : Primary antibody

Panel B : Merge of panel A with the live view of the cell

Dilution : 1:50

**GTX16633 WB Image**

WB analysis of rat brain (lanes 1 and 4), mouse brain (lanes 2 and 5) and C6 (lanes 3 and 6) lysates using GTX16633 Cav1.3 antibody preincubated with or without immunogen peptide.

Dilution : 1:200



For full product information, images and publications, please visit our [website](#).