

KCNMB2 antibody

Cat. No. GTX16645

Host	Rabbit
Clonality	Polyclonal
Isotype	IgG
Applications	WB, ICC/IF, IHC-Fr
Reactivity	Human, Rat

Package

50 µl

Applications

Application Note

*Optimal dilutions/concentrations should be determined by the researcher.

Suggested dilution	Recommended dilution
WB	Assay dependent
ICC/IF	Assay dependent
IHC-Fr	Assay dependent

Not tested in other applications.

Calculated MW 27 kDa. ([Note](#))

Properties

Form	Liquid
Buffer	PBS, 1% BSA
Preservative	0.05% Sodium azide
Storage	Store as concentrated solution. Centrifuge briefly prior to opening vial. For short-term storage (1-2 weeks), store at 4°C. For long-term storage, aliquot and store at -20°C or below. Avoid multiple freeze-thaw cycles.
Concentration	0.8 mg/ml (Please refer to the vial label for the specific concentration.)
Immunogen	Peptide (C)RHDEKRNIYQKIRDHLLD, corresponding to amino acid residues 14-32 (Intracellular, N-terminal part) of human KCNMB2 (Accession : Q9Y691).
Purification	Purified by antigen-affinity chromatography
Conjugation	Unconjugated

Note

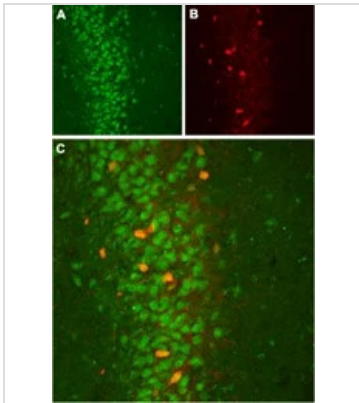
For laboratory research use only. Not for any clinical, therapeutic, or diagnostic use in humans or animals. Not for animal or human consumption.

Purchasers shall not, and agree not to enable third parties to, analyze, copy, reverse engineer or otherwise attempt to determine the structure or sequence of the product.



For full product information, images and publications, please visit our [website](#).

DATA IMAGES



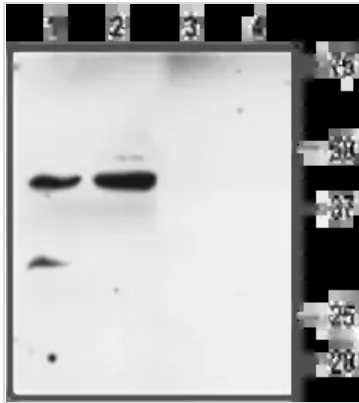
GTx16645 IHC-Fr Image

IHC-Fr analysis of rat hippocampus tissue using GTx16645 KCNMB2 antibody.

Panel A : KCNMB2 appears in the pyramidal layer (green).

Panel B : Staining of interneurons with mouse anti-parvalbumin (PV, red).

Panel C : Merge of KCNMB2 and PV demonstrates presence of KCNMB2 also in PV (GABA containing) cells (orange).



GTx16645 WB Image

WB analysis of rat kidney (lanes 1 and 3) and heart (lanes 2 and 4) membrane lysates using GTx16645 KCNMB2 antibody preincubated with or without immunogen peptide.

Dilution : 1:200



For full product information, images and publications, please visit our [website](https://www.genetex.com).