

## KCNK9 antibody

Cat. No. GTX16652

Host	Rabbit
Clonality	Polyclonal
Isotype	IgG
Applications	WB, IHC
Reactivity	Human, Rat

Package

50 µl

## Applications

## Application Note

\*Optimal dilutions/concentrations should be determined by the researcher.

Suggested dilution	Recommended dilution
WB	Assay dependent
IHC	Assay dependent

Not tested in other applications.

Calculated MW 44 kDa. ( [Note](#) )

## Properties

Form	Liquid
Buffer	PBS, 1% BSA
Preservative	0.025% Sodium azide
Storage	Store as concentrated solution. Centrifuge briefly prior to opening vial. For short-term storage (1-2 weeks), store at 4°C. For long-term storage, aliquot and store at -20°C or below. Avoid multiple freeze-thaw cycles.
Concentration	0.75 mg/ml (Please refer to the vial label for the specific concentration.)
Immunogen	Peptide (C)DDYQQLELVILQSEPHR, corresponding to amino acid residues 57-73 (Extracellular, near the P1 loop) of rat KCNK9 (accession number Q9ES08).
Purification	Purified by antigen-affinity chromatography
Conjugation	Unconjugated

## Note

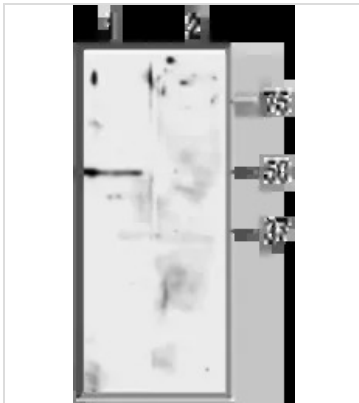
For laboratory research use only. Not for any clinical, therapeutic, or diagnostic use in humans or animals. Not for animal or human consumption.

Purchasers shall not, and agree not to enable third parties to, analyze, copy, reverse engineer or otherwise attempt to determine the structure or sequence of the product.



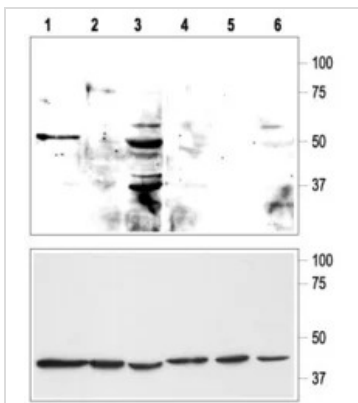
For full product information, images and publications, please visit our [website](#).

## DATA IMAGES


**GTX16652 WB Image**

WB analysis of rat cerebellum lysate using GTX16652 KCNK9 antibody preincubated with or without immunogen peptide.

Dilution : 1:200


**GTX16652 WB Image**

WB analysis of rat cerebellum (lanes 1, 4), MCF-10A (lanes 2, 5), and MCF-7 (lanes 3, 6) cell lysates using GTX16652 KCNK9 antibody preincubated with or without immunogen peptide.



For full product information, images and publications, please visit our [website](https://www.genetex.com).