

KCNMB4 antibody

Cat. No. GTX16666

Host	Rabbit
Clonality	Polyclonal
Isotype	IgG
Applications	WB, ICC/IF, IHC-Fr
Reactivity	Human, Mouse, Rat

Package

50 µl

Applications

Application Note

*Optimal dilutions/concentrations should be determined by the researcher.

Suggested dilution	Recommended dilution
WB	Assay dependent
ICC/IF	Assay dependent
IHC-Fr	Assay dependent

Not tested in other applications.

Calculated MW 24 kDa. ([Note](#))

Properties

Form	Liquid
Buffer	PBS, 1% BSA
Preservative	0.05% Sodium azide
Storage	Store as concentrated solution. Centrifuge briefly prior to opening vial. For short-term storage (1-2 weeks), store at 4°C. For long-term storage, aliquot and store at -20°C or below. Avoid multiple freeze-thaw cycles.
Concentration	0.8 mg/ml (Please refer to the vial label for the specific concentration.)
Immunogen	Peptide AKLRVSYEYEAEDKS(C), corresponding to amino acid residues 2-17 (Intracellular, N-terminal part) of rat KCNMB4 (Accession : Q9ESK8).
Purification	Purified by antigen-affinity chromatography
Conjugation	Unconjugated

Note

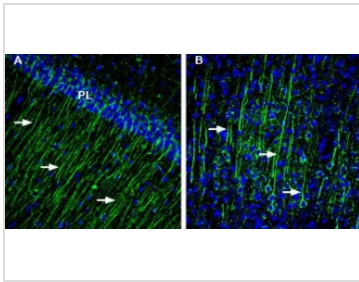
For laboratory research use only. Not for any clinical, therapeutic, or diagnostic use in humans or animals. Not for animal or human consumption.

Purchasers shall not, and agree not to enable third parties to, analyze, copy, reverse engineer or otherwise attempt to determine the structure or sequence of the product.



For full product information, images and publications, please visit our [website](#).

DATA IMAGES



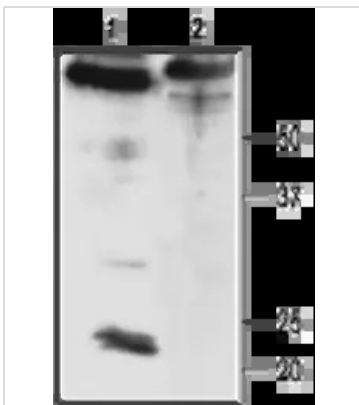
GTX16666 IHC-Fr Image

IHC-Fr analysis of rat hippocampus and cortex tissue using GTX16666 KCNMB4 antibody. Cell nuclei are stained with DAPI (blue).

Panel A : KCNMB4 staining (green) in rat hippocampal CA1 region is detected in apical dendrites (arrows) of pyramidal neurons from the pyramidal layer (PL).

Panel B : Staining in rat parietal cortex shows staining of apical dendrites (arrows) of pyramidal neurons.

Dilution : 1:200



GTX16666 WB Image

WB analysis of rat brain membrane lysate using GTX16666 KCNMB4 antibody preincubated with or without immunogen peptide.

Dilution : 1:200



For full product information, images and publications, please visit our [website](https://www.genetex.com).