

## Ki67 antibody [SP6]

Cat. No. GTX16667

Host	Rabbit
Clonality	Monoclonal
Isotype	IgG
Applications	WB, ICC/IF, IHC-P, IHC-Fr, FCM, IHC
Reactivity	Human, Mouse, Rat, Chicken, Pig

References ( 211 )

Package

500 µl

## PRODUCT

## Summary

Ki67 antibody recognizes Ki67 antigen, a nuclear nonhistone protein with a predicted molecular weight of 359 kDa. Ki67 is present during the active phases of the cell cycle and is used clinically as a proliferation marker. Ki67 antibody is used extensively in immunohistochemistry to assess the grade or apparent aggressiveness of various malignancies.

## Applications

## Application Note

\*Optimal dilutions/concentrations should be determined by the researcher.

Suggested dilution	Recommended dilution
WB	Assay dependent
ICC/IF	Assay dependent
IHC-P	1:25-1:50
IHC-Fr	Assay dependent
FCM	Assay dependent
IHC	Assay dependent

**Note : Recommended retrieval buffer : EDTA Buffer pH 8.0**

Not tested in other applications.

**Calculated MW** 359 kDa. ( [Note](#) )

## Properties

Form	Liquid
Buffer	Tissue culture supernatant, PBS, BSA
Preservative	0.09% Sodium azide
Storage	Store as concentrated solution. Centrifuge briefly prior to opening vial. Store at 4°C. DO NOT FREEZE.
Purification	Tissue culture supernatant
Conjugation	Unconjugated

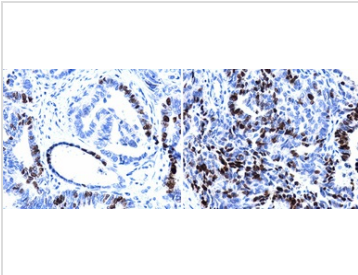


For full product information, images and publications, please visit our [website](#).

For laboratory research use only. Not for any clinical, therapeutic, or diagnostic use in humans or animals. Not for animal or human consumption.

**Note**

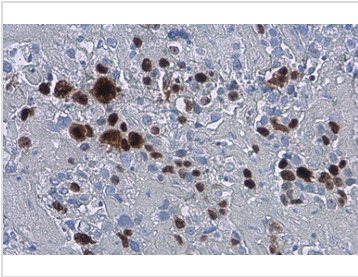
Purchasers shall not, and agree not to enable third parties to, analyze, copy, reverse engineer or otherwise attempt to determine the structure or sequence of the product.

**DATA IMAGES**

**GTx16667 IHC-P Image**

Ki67 antibody [SP6] detects Ki67 protein at nucleus in human cervical metaplasia (left) and carcinoma (right) by immunohistochemical analysis.

Sample: Paraffin-embedded human cervix.

Ki67 antibody [SP6] (GTx16667) diluted at 1:200.

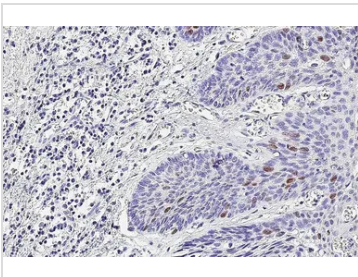

**GTx16667 IHC-P Image**

Ki67 antibody [SP6] detects Ki67 protein at nucleus by immunohistochemical analysis.

Sample: Paraffin-embedded human cervical carcinoma.

Ki67 stained by Ki67 antibody [SP6] (GTx16667) diluted at 1:200.

Antigen Retrieval: Citrate buffer, pH 6.0, 15 min

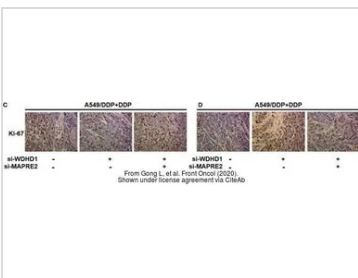

**GTx16667 IHC-P Image**

Ki67 antibody [SP6] detects Ki67 protein by immunohistochemical analysis.

Sample: Paraffin-embedded human oral carcinoma.

Ki67 stained by Ki67 antibody [SP6] (GTx16667) diluted at 1:200.

Antigen Retrieval: Tris-EDTA buffer, pH 9.0, 15 min


**GTx16667 IHC-P Image**

The data was published in the journal Front Oncol in 2020. [PMID: 32426268](https://pubmed.ncbi.nlm.nih.gov/32426268/)



For full product information, images and publications, please visit our [website](https://www.genetex.com).