

CD3 antibody [SP7]

Cat. No. GTX16669

Host	Rabbit
Clonality	Monoclonal
Isotype	IgG
Applications	ICC/IF, IHC-P, IHC-Fr, FCM
Reactivity	Human, Mouse, Rat, Pig

References (27)

Package

500 µl

Applications

Application Note

*Optimal dilutions/concentrations should be determined by the researcher.

Suggested dilution	Recommended dilution
ICC/IF	Assay dependent
IHC-P	1:25-1:50
IHC-Fr	Assay dependent
FCM	Assay dependent

Note : Recommendations for antigen retrieval : Citrate Buffer pH 6.0

Not tested in other applications.

Product Note

This antibody reacts with the intracytoplasmic portion of the CD3 antigen expressed by T cells. It stains human T cells in both the cortex and medulla of the thymus and in peripheral lymphoid tissues.

Properties

Form	Liquid
Buffer	Tissue culture supernatant
Preservative	0.09% Sodium azide
Storage	Store as concentrated solution. Centrifuge briefly prior to opening vial. Store at 4°C.
Immunogen	A synthetic 13-mer peptide corresponding to aa 156-168 of the ε chain of human CD3 protein.
Purification	Unpurified
Conjugation	Unconjugated

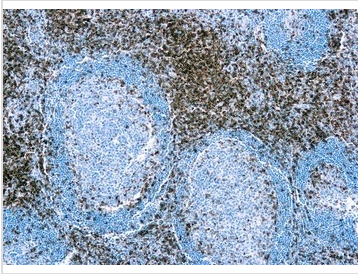
Note

For laboratory research use only. Not for any clinical, therapeutic, or diagnostic use in humans or animals. Not for animal or human consumption.

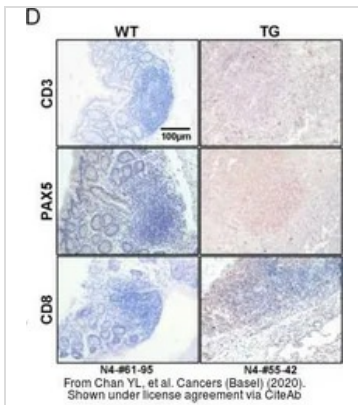
Purchasers shall not, and agree not to enable third parties to, analyze, copy, reverse engineer or otherwise attempt to determine the structure or sequence of the product.



For full product information, images and publications, please visit our [website](#).

DATA IMAGES

GTX16669 IHC-P Image

IHC-P analysis of human tonsil tissue using GTX16669 CD3 antibody [SP7].


GTX16669 IHC-P Image

The data was published in the journal Cancers (Basel) in 2020. [PMID: 32650570](https://pubmed.ncbi.nlm.nih.gov/32650570/)



For full product information, images and publications, please visit our [website](https://www.genetex.com).