

PYK2 antibody

Cat. No. GTX16672

Host	Rabbit
Clonality	Polyclonal
Isotype	IgG
Applications	WB, IP
Reactivity	Human, Mouse

Package
125 µg

Applications

Application Note

*Optimal dilutions/concentrations should be determined by the researcher.

Suggested dilution	Recommended dilution
WB	0.5-2µg/ml
IP	4µg antibody/ 500µg lysate

Not tested in other applications.

Calculated MW	116 kDa. (Note)
Product Note	Does not crossreact with FAK.

Properties

Form	Liquid
Buffer	100mM Tris-Glycine, 150mM NaCl
Preservative	0.05% Sodium azide
Storage	Store as concentrated solution. Centrifuge briefly prior to opening vial. For short-term storage (1-2 weeks), store at 4°C. For long-term storage, aliquot and store at -20°C or below. Avoid multiple freeze-thaw cycles.
Concentration	Batch dependent (Please refer to the vial label for the specific concentration.)
Immunogen	GST fusion protein containing aa726-863 of human Pyk2
Purification	Protein A purified
Conjugation	Unconjugated

Note

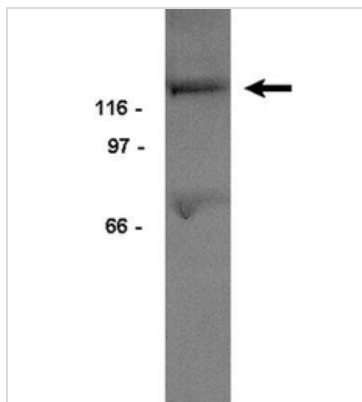
For laboratory research use only. Not for any clinical, therapeutic, or diagnostic use in humans or animals. Not for animal or human consumption.

Purchasers shall not, and agree not to enable third parties to, analyze, copy, reverse engineer or otherwise attempt to determine the structure or sequence of the product.



For full product information, images and publications, please visit our [website](#).

DATA IMAGES



GTX16672 WB Image

WB analysis of mouse brain tissue lysate using GTX16672 PYK2 antibody.

Dilution : 0.5µg/ml



For full product information, images and publications, please visit our [website](#).