

KCNAB2 antibody

Cat. No. GTX16689

Host	Rabbit
Clonality	Polyclonal
Isotype	IgG
Applications	WB, ICC/IF, IHC-Fr
Reactivity	Human, Mouse, Rat

Package

50 µl

Applications

Application Note

*Optimal dilutions/concentrations should be determined by the researcher.

Suggested dilution	Recommended dilution
WB	Assay dependent
ICC/IF	Assay dependent
IHC-Fr	Assay dependent

Not tested in other applications.

Calculated MW 41 kDa. ([Note](#))

Properties

Form	Liquid
Buffer	PBS, 1% BSA
Preservative	0.025% Sodium azide
Storage	Store as concentrated solution. Centrifuge briefly prior to opening vial. For short-term storage (1-2 weeks), store at 4°C. For long-term storage, aliquot and store at -20°C or below. Avoid multiple freeze-thaw cycles.
Concentration	0.8 mg/ml (Please refer to the vial label for the specific concentration.)
Immunogen	Peptide SPGMIYSTRYGSPKR(C), corresponding to amino acid residues 20-34 (N-terminal part) of rat KCNAB2 (Accession : P62483).
Purification	Purified by antigen-affinity chromatography
Conjugation	Unconjugated

Note

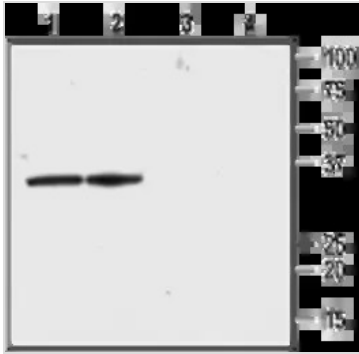
For laboratory research use only. Not for any clinical, therapeutic, or diagnostic use in humans or animals. Not for animal or human consumption.

Purchasers shall not, and agree not to enable third parties to, analyze, copy, reverse engineer or otherwise attempt to determine the structure or sequence of the product.



For full product information, images and publications, please visit our [website](#).

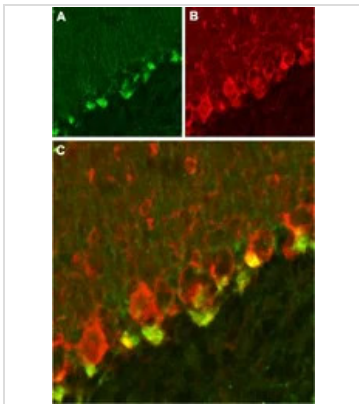
DATA IMAGES



GTX16689 WB Image

WB analysis of rat brain (lanes 1 and 3) and membranes (lanes 2 and 4) lysates using GTX16689 KCNAB2 antibody preincubated with or without immunogen peptide.

Dilution : 1:200



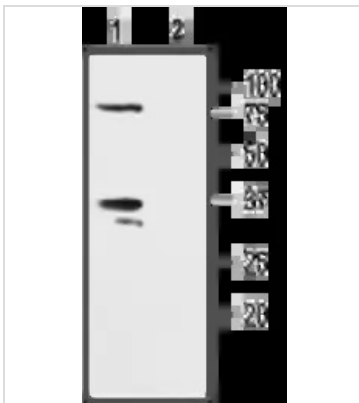
GTX16689 IHC-Fr Image

IHC-Fr analysis of mouse cerebellum tissue using GTX16689 KCNAB2 antibody.

Panel A : KVβ2 appears adjacent to Purkinje cells (green).

Panel B : Staining of GABAergic cells with mouse anti-parvalbumin (PV, red).

Panel C : Merge of KVβ2 and PV demonstrates the presence of KVβ2 adjacent to Purkinje cells.



GTX16689 WB Image

WB analysis of Jurkat cell lysates using GTX16689 KCNAB2 antibody preincubated with or without immunogen peptide.

Dilution : 1:200



For full product information, images and publications, please visit our [website](#).