

## TRESK antibody

Cat. No. GTX16694

Host	Rabbit
Clonality	Polyclonal
Isotype	IgG
Applications	WB, ICC/IF, IHC-Fr, LCI
Reactivity	Mouse, Rat

Package

50 µl

## Applications

## Application Note

\*Optimal dilutions/concentrations should be determined by the researcher.

Suggested dilution	Recommended dilution
WB	Assay dependent
ICC/IF	Assay dependent
IHC-Fr	Assay dependent
LCI	Assay dependent

Not tested in other applications.

**Calculated MW** 44 kDa. ( [Note](#) )

**Product Note** We do not recommend use of this product for Human samples.

## Properties

Form	Liquid
Buffer	PBS, 1% BSA
Preservative	0.025% Sodium azide
Storage	Store as concentrated solution. Centrifuge briefly prior to opening vial. For short-term storage (1-2 weeks), store at 4°C. For long-term storage, aliquot and store at -20°C or below. Avoid multiple freeze-thaw cycles.
Concentration	0.8 mg/ml (Please refer to the vial label for the specific concentration.)
Immunogen	Peptide (C)EAEENPELKKFLDD, corresponding to amino acid residues 62-75 ( 1st extracellular loop) of mouse KCNK18 (Accession : Q6VV64).
Purification	Purified by antigen-affinity chromatography
Conjugation	Unconjugated



For full product information, images and publications, please visit our [website](#).

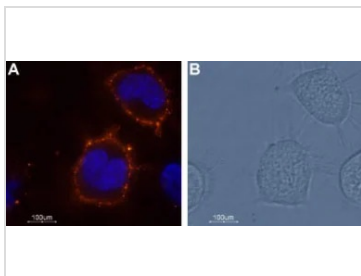
Date 2025 / 12 / 28 Page 1 of 2

For laboratory research use only. Not for any clinical, therapeutic, or diagnostic use in humans or animals. Not for animal or human consumption.

## Note

Purchasers shall not, and agree not to enable third parties to, analyze, copy, reverse engineer or otherwise attempt to determine the structure or sequence of the product.

## DATA IMAGES



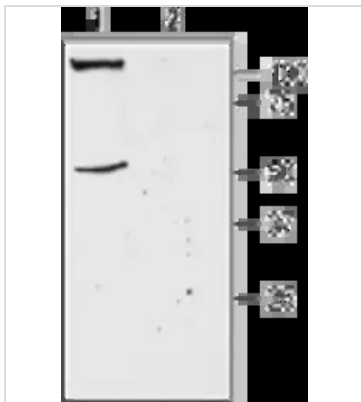
### GTX16694 LCI Image

Live cell imaging analysis of living ND7/23 cells using GTX16694 TRESK antibody.

Orange : Primary antibody

Blue : Hoechst 33342 for nuclear staining

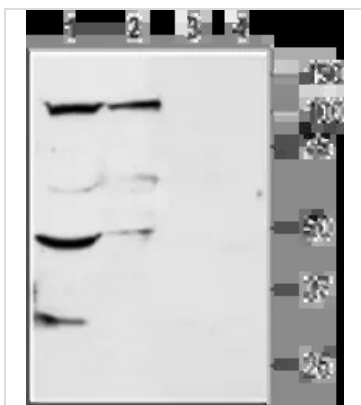
Dilution : 1:50



### GTX16694 WB Image

WB analysis of mouse brain membrane lysates using GTX16694 TRESK antibody preincubated with or without immunogen peptide.

Dilution : 1:200



### GTX16694 WB Image

WB analysis of rat brain (lanes 1 and 3) and dorsal root ganglion (lanes 2 and 4) membrane lysates using GTX16694 TRESK antibody preincubated with or without immunogen peptide.

Dilution : 1:200



For full product information, images and publications, please visit our [website](https://www.genetex.com).