

Placental Alkaline Phosphatase antibody [SP15]

Cat. No. GTX16695

Host	Rabbit
Clonality	Monoclonal
Isotype	IgG
Applications	IHC-P, IHC
Reactivity	Human, Mouse, Rat

References (1)

Package

500 µl

Applications

Application Note

*Optimal dilutions/concentrations should be determined by the researcher.

Suggested dilution	Recommended dilution
IHC-P	Assay dependent
IHC	Assay dependent

Not tested in other applications.

Properties

Form	Liquid
Buffer	Tissue culture supernatant
Preservative	0.09% Sodium azide
Storage	Store as concentrated solution. Centrifuge briefly prior to opening vial. Store at 4°C.
Concentration	Batch dependent (Please refer to the vial label for the specific concentration.)
Immunogen	Recombinant full length protein (Human).
Purification	Purified IgG
Conjugation	Unconjugated

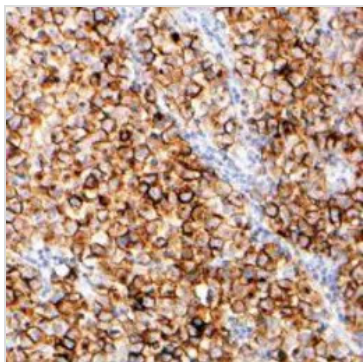
Note

For laboratory research use only. Not for any clinical, therapeutic, or diagnostic use in humans or animals. Not for animal or human consumption.

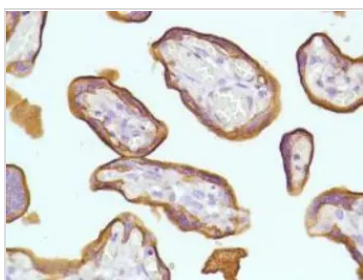
Purchasers shall not, and agree not to enable third parties to, analyze, copy, reverse engineer or otherwise attempt to determine the structure or sequence of the product.

For full product information, images and publications, please visit our [website](#).

DATA IMAGES

**GTX16695 IHC Image**

Human Seminoma stained with anti-PLAP antibody

**GTX16695 IHC Image**

Human Placenta stained with anti-PLAP antibody



For full product information, images and publications, please visit our [website](#).