

CD8 antibody [SP16]

Cat. No. GTX16696

Host	Rabbit
Clonality	Monoclonal
Isotype	IgG
Applications	IHC-P
Reactivity	Human, Mouse

References (6)

Package

500 µl

Applications

Application Note

*Optimal dilutions/concentrations should be determined by the researcher.

Suggested dilution	Recommended dilution
IHC-P	1:50-1:100

Note : Recommendations for antigen retrieval : Citrate Buffer pH 6.0

Not tested in other applications.

Properties

Form	Liquid
Buffer	Tissue culture supernatant
Preservative	0.09% Sodium azide
Storage	Store as concentrated solution. Centrifuge briefly prior to opening vial. Store at 4°C.
Immunogen	Synthetic peptide sequence comprising the 13 C-terminal amino acids of the cytoplasmic domain of the CD8 α chain.
Purification	Unpurified
Conjugation	Unconjugated

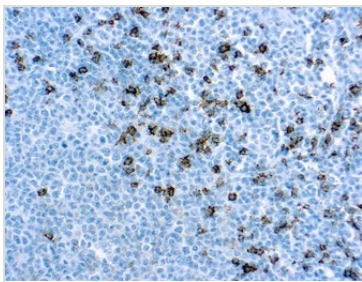
Note

For laboratory research use only. Not for any clinical, therapeutic, or diagnostic use in humans or animals. Not for animal or human consumption.

Purchasers shall not, and agree not to enable third parties to, analyze, copy, reverse engineer or otherwise attempt to determine the structure or sequence of the product.

For full product information, images and publications, please visit our [website](#).

DATA IMAGES

**GTX16696 IHC-P Image**

IHC-P analysis of human tonsil tissue using GTX16696 CD8 antibody [SP16].



For full product information, images and publications, please visit our [website](#).