

## KCNT1 antibody

**Cat. No. GTX16697**

<b>Host</b>	Rabbit
<b>Clonality</b>	Polyclonal
<b>Isotype</b>	IgG
<b>Applications</b>	WB
<b>Reactivity</b>	Mouse, Rat

**Package**  
50 µl

## Applications

**Application Note**

\*Optimal dilutions/concentrations should be determined by the researcher.

Suggested dilution	Recommended dilution
--------------------	----------------------

WB	Assay dependent
----	-----------------

Not tested in other applications.

<b>Calculated MW</b>	140 kDa. ( <a href="#">Note</a> )
----------------------	-----------------------------------

<b>Product Note</b>	We do not recommend use of this product for Human samples.
---------------------	--

## Properties

<b>Form</b>	Liquid
-------------	--------

<b>Buffer</b>	PBS, 1% BSA
---------------	-------------

<b>Preservative</b>	0.05% Sodium azide
---------------------	--------------------

<b>Storage</b>	Store as concentrated solution. Centrifuge briefly prior to opening vial. For short-term storage (1-2 weeks), store at 4°C. For long-term storage, aliquot and store at -20°C or below. Avoid multiple freeze-thaw cycles.
----------------	--

<b>Concentration</b>	0.8 mg/ml (Please refer to the vial label for the specific concentration.)
----------------------	--

<b>Immunogen</b>	Peptide (C)KQEEKQNRRLAG, corresponding to amino acid residues 619-631 (Intracellular, C-terminal) of rat Slack (Accession : Q9Z258).
------------------	--

<b>Purification</b>	Purified by antigen-affinity chromatography
---------------------	---

<b>Conjugation</b>	Unconjugated
--------------------	--------------

**Note**

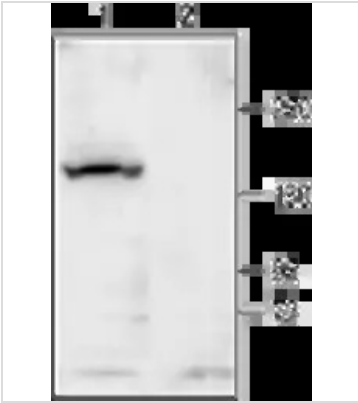
For laboratory research use only. Not for any clinical, therapeutic, or diagnostic use in humans or animals. Not for animal or human consumption.

Purchasers shall not, and agree not to enable third parties to, analyze, copy, reverse engineer or otherwise attempt to determine the structure or sequence of the product.



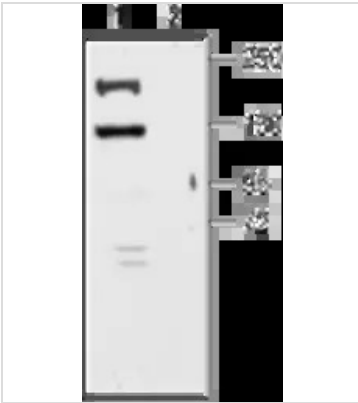
For full product information, images and publications, please visit our [website](#).

## DATA IMAGES

**GTX16697 WB Image**

WB analysis of rat brain membrane lysates using GTX16697 KCNT1 antibody preincubated with or without immunogen peptide.

Dilution : 1:200

**GTX16697 WB Image**

WB analysis of mouse brain membrane lysates using GTX16697 KCNT1 antibody preincubated with or without immunogen peptide.

Dilution : 1:200



For full product information, images and publications, please visit our [website](#).