

KCNT1 antibody

Cat. No. GTX16697

Host	Rabbit
Clonality	Polyclonal
Isotype	IgG
Applications	WB
Reactivity	Mouse, Rat

Package
50 µl

Applications

Application Note

*Optimal dilutions/concentrations should be determined by the researcher.

Suggested dilution	Recommended dilution
WB	Assay dependent

Not tested in other applications.

Calculated MW 140 kDa. ([Note](#))

Product Note We do not recommend use of this product for Human samples.

Properties

Form Liquid

Buffer PBS, 1% BSA

Preservative 0.05% Sodium azide

Storage Store as concentrated solution. Centrifuge briefly prior to opening vial. For short-term storage (1-2 weeks), store at 4°C. For long-term storage, aliquot and store at -20°C or below. Avoid multiple freeze-thaw cycles.

Concentration 0.8 mg/ml (Please refer to the vial label for the specific concentration.)

Immunogen Peptide (C)KQEEKQNRRLAG, corresponding to amino acid residues 619-631 (Intracellular, C-terminal) of rat Slack (Accession : Q9Z258).

Purification Purified by antigen-affinity chromatography

Conjugation Unconjugated

Note

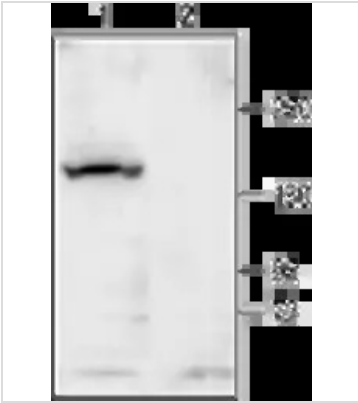
For laboratory research use only. Not for any clinical, therapeutic, or diagnostic use in humans or animals. Not for animal or human consumption.

Purchasers shall not, and agree not to enable third parties to, analyze, copy, reverse engineer or otherwise attempt to determine the structure or sequence of the product.



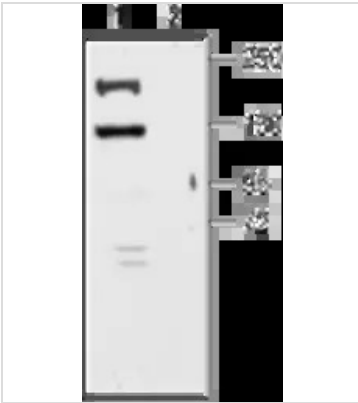
For full product information, images and publications, please visit our [website](#).

DATA IMAGES

**GTX16697 WB Image**

WB analysis of rat brain membrane lysates using GTX16697 KCNT1 antibody preincubated with or without immunogen peptide.

Dilution : 1:200

**GTX16697 WB Image**

WB analysis of mouse brain membrane lysates using GTX16697 KCNT1 antibody preincubated with or without immunogen peptide.

Dilution : 1:200



For full product information, images and publications, please visit our [website](#).