

## CD23 antibody [SP23]

**Cat. No. GTX16702**

|                     |            |
|---------------------|------------|
| <b>Host</b>         | Rabbit     |
| <b>Clonality</b>    | Monoclonal |
| <b>Isotype</b>      | IgG        |
| <b>Applications</b> | IHC-P      |
| <b>Reactivity</b>   | Human      |

**Package**  
500 µl

### Applications

#### Application Note

\*Optimal dilutions/concentrations should be determined by the researcher.

| Suggested dilution | Recommended dilution |
|--------------------|----------------------|
| IHC-P              | 1:50-1:100           |

**Note : Recommendations for antigen retrieval : Citrate Buffer pH 6.0**

Not tested in other applications.

### Properties

|                     |   |
|---------------------|---|
| <b>Form</b>         | Liquid  |
| <b>Buffer</b>       | Tissue culture supernatant  |
| <b>Preservative</b> | 0.09% Sodium azide  |
| <b>Storage</b>      | Store as concentrated solution. Centrifuge briefly prior to opening vial. Store at 4°C. |
| <b>Immunogen</b>    | Recombinant protein encoding human CD23 48-248 aa.                                      |
| <b>Purification</b> | Unpurified  |
| <b>Conjugation</b>  | Unconjugated  |

#### Note

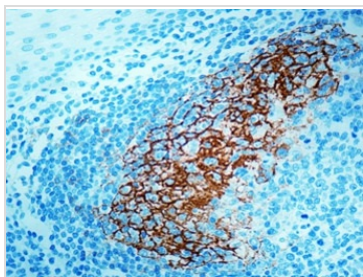
For laboratory research use only. Not for any clinical, therapeutic, or diagnostic use in humans or animals. Not for animal or human consumption.

Purchasers shall not, and agree not to enable third parties to, analyze, copy, reverse engineer or otherwise attempt to determine the structure or sequence of the product.



For full product information, images and publications, please visit our [website](#).

## DATA IMAGES



### GTX16702 IHC-P Image

IHC-P analysis of human tonsil tissue using GTX16702 CD23 antibody [SP23].



For full product information, images and publications, please visit our [website](#).