

Kv beta 1 antibody

Cat. No. GTX16705

Host	Rabbit
Clonality	Polyclonal
Isotype	IgG
Applications	WB
Reactivity	Human, Mouse, Rat

Package

50 µl

Applications

Application Note

*Optimal dilutions/concentrations should be determined by the researcher.

Suggested dilution	Recommended dilution
WB	Assay dependent

Not tested in other applications.

Calculated MW 45 kDa. ([Note](#))

Product Note

This antibody will recognize the "canonical" splice isoform of human KVβ1 (also known as KVβ1.3). It will not recognize splice variants KVβ1.1 and KVβ1.2. For more information see human KVβ1 entry Q14722.

Properties

Form	Liquid
Buffer	PBS, 1% BSA
Preservative	0.05% Sodium azide
Storage	Store as concentrated solution. Centrifuge briefly prior to opening vial. For short-term storage (1-2 weeks), store at 4°C. For long-term storage, aliquot and store at -20°C or below. Avoid multiple freeze-thaw cycles.
Concentration	0.8 mg/ml (Please refer to the vial label for the specific concentration.)
Immunogen	Peptide (C)TPQHHISLKESTAK, corresponding to amino acid residues 54-67 (N-terminus) of rat KCNAB1 (Accession : P63144).
Purification	Purified by antigen-affinity chromatography
Conjugation	Unconjugated

Note

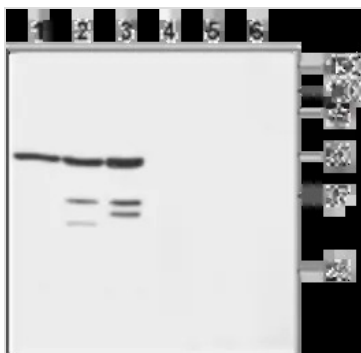
For laboratory research use only. Not for any clinical, therapeutic, or diagnostic use in humans or animals. Not for animal or human consumption.

Purchasers shall not, and agree not to enable third parties to, analyze, copy, reverse engineer or otherwise attempt to determine the structure or sequence of the product.



For full product information, images and publications, please visit our [website](#).

DATA IMAGES



GTX16705 WB Image

WB analysis of SH-SY5Y (lanes 1 and 4), mouse (lanes 2 and 5), and rat brain (lanes 3 and 6) lysates using GTX16705 Kv beta 1 antibody preincubated with or without immunogen peptide.

Dilution : 1:200



For full product information, images and publications, please visit our [website](#).

Date 2025 / 12 / 28 Page 2 of 2