

KCNG1 antibody

Cat. No. GTX16711

Host	Rabbit
Clonality	Polyclonal
Isotype	IgG
Applications	WB, IHC-Fr, IHC (Free Floating)
Reactivity	Mouse, Rat

Package
50 µl

Applications

Application Note

*Optimal dilutions/concentrations should be determined by the researcher.

Suggested dilution	Recommended dilution
WB	Assay dependent
IHC-Fr	Assay dependent
IHC (Free Floating)	Assay dependent

Not tested in other applications.

Calculated MW 58 kDa. ([Note](#))

Properties

Form	Liquid
Buffer	PBS, 1% BSA
Preservative	0.05% Sodium azide
Storage	Store as concentrated solution. Centrifuge briefly prior to opening vial. For short-term storage (1-2 weeks), store at 4°C. For long-term storage, aliquot and store at -20°C or below. Avoid multiple freeze-thaw cycles.
Concentration	0.8 mg/ml (Please refer to the vial label for the specific concentration.)
Immunogen	Peptide (C)RRKPSTGNSYLDK, corresponding to amino acid residues 325-337 (2nd extracellular loop) of mouse Kv6.1 (Accession : A2BDX4).
Purification	Purified by antigen-affinity chromatography
Conjugation	Unconjugated

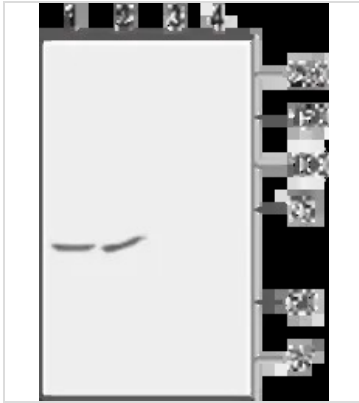
Note

For laboratory research use only. Not for any clinical, therapeutic, or diagnostic use in humans or animals. Not for animal or human consumption.

Purchasers shall not, and agree not to enable third parties to, analyze, copy, reverse engineer or otherwise attempt to determine the structure or sequence of the product.

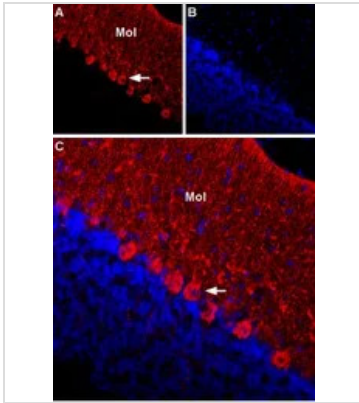


For full product information, images and publications, please visit our [website](#).

DATA IMAGES

GTKX16711 IHC (Free Floating) Image

WB analysis of rat (lanes 1 and 3) and mouse (lanes 2 and 4) brain membrane lysates using GTX16711 KCNG1 antibody preincubated with or without immunogen peptide.

Dilution : 1:400


GTKX16711 WB Image

IHC-Frfl (free floating) analysis of rat cerebellum tissue using GTX16711 KCNG1 antibody.

Panel A : KV6.1 is detected in rat cerebellum (red). Staining is apparent in Purkinje neurons (arrow) and in the molecular layer (Mol).

Panel B : Cell nuclei in the same section are stained with DAPI (blue).

Panel C : Merge of the two images.

Dilution : 1:200



For full product information, images and publications, please visit our [website](#).