

## Maxi Potassium channel alpha antibody

Cat. No. GTX16725

Host	Rabbit
Clonality	Polyclonal
Isotype	IgG
Application	WB, FACS, IHC
Reactivity	Human, Mouse, Rat

Package

50 µl

## APPLICATION

## Application Note

\*Optimal dilutions/concentrations should be determined by the researcher.

Suggested dilution	Recommended dilution
WB	Assay dependent
FACS	Assay dependent
IHC	Assay dependent

Not tested in other applications.

Calculated MW 134 kDa. ([Note](#))

## PROPERTIES

Form	Liquid
Buffer	PBS, 1% BSA
Preservative	0.05% Sodium azide
Storage	Store as concentrated solution. Centrifuge briefly prior to opening vial. For short-term storage (1-2 weeks), store at 4°C. For long-term storage, aliquot and store at -20°C or below. Avoid multiple freeze-thaw cycles.
Concentration	0.8 mg/ml (Please refer to the vial label for the specific concentration.)
Immunogen	Peptide (C)DSSNPIES(S)QNFYKD, corresponding to amino acid residues 199-213 (1st extracellular loop) of rat KCNMA1 (Accession : Q62976).
Purification	Purified by antigen-affinity chromatography
Conjugation	Unconjugated

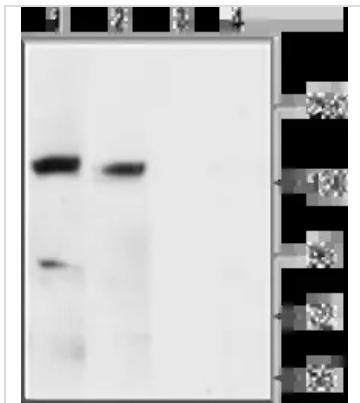
## Note

For laboratory research use only. Not for any clinical, therapeutic, or diagnostic use in humans or animals. Not for animal or human consumption.

Purchasers shall not, and agree not to enable third parties to, analyze, copy, reverse engineer or otherwise attempt to determine the structure or sequence of the product.

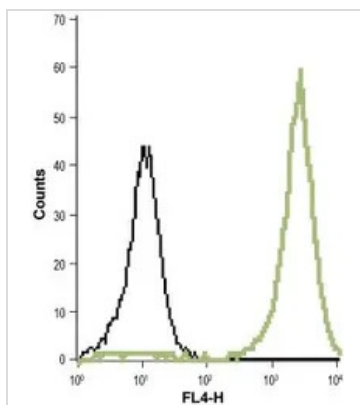


For full product information, images and publications, please visit our [website](#).

**DATA IMAGES**

**GTX16725 WB Image**

WB analysis of rat (lanes 1 and 3) and mouse (lanes 2 and 4) brain membrane lysates using GTX16725 Maxi Potassium channel alpha antibody preincubated with or without immunogen peptide.

Dilution : 1:200


**GTX16725 FACS Image**

FACS analysis of THP-1 cells using GTX16725 Maxi Potassium channel alpha antibody.

Black : Unstained cell

Green : Cell staining with primary antibody

Dilution : 1:20



For full product information, images and publications, please visit our [website](https://www.genetex.com).