

# NORE1 antibody

**Cat. No. GTX16757**

|                     |                   |
|---------------------|-------------------|
| <b>Host</b>         | Rabbit            |
| <b>Clonality</b>    | Polyclonal        |
| <b>Isotype</b>      | IgG               |
| <b>Applications</b> | WB                |
| <b>Reactivity</b>   | Human, Mouse, Rat |

**Package**  
100 µg

## Applications

### Application Note

WB: Use at a dilution of 1/500 - 1/1000. Predicted molecular weight: 47 kDa. Optimal dilutions/concentrations should be determined by the end user.

## Properties

|                      |  |
|----------------------|--|
| <b>Form</b>          | Liquid   |
| <b>Buffer</b>        | PBS  |
| <b>Preservative</b>  | 0.02% Sodium azide   |
| <b>Storage</b>       | Store as concentrated solution. Centrifuge briefly prior to opening vial. For short-term storage (1-2 weeks), store at 4°C. For long-term storage, aliquot and store at -20°C or below. Avoid multiple freeze-thaw cycles. |
| <b>Concentration</b> | 1 mg/ml (Please refer to the vial label for the specific concentration.)   |
| <b>Immunogen</b>     | Synthetic peptide: DNPQKFALFKRIHKDGQ, corresponding to amino acids 313-329 of NORE1. This sequence is located in the RA domain of NORE1 and is 100% conserved between human, rat and mouse.                                |
| <b>Purification</b>  | Protein A purified   |
| <b>Conjugation</b>   | Unconjugated   |

### Note

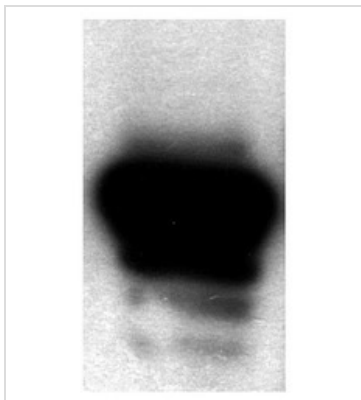
For laboratory research use only. Not for any clinical, therapeutic, or diagnostic use in humans or animals. Not for animal or human consumption.

Purchasers shall not, and agree not to enable third parties to, analyze, copy, reverse engineer or otherwise attempt to determine the structure or sequence of the product.



For full product information, images and publications, please visit our [website](#).

## DATA IMAGES


**GTX16757 WB Image**

Western blot of anti-NORE1 performed from 50 ug of 293T cell lysates overexpressed with NORE1. Primary antibody anti-NORE1 (dilution 1/1,000) was incubated ON at 4 degree C. Second rabbit HRP antibody was incubated 1 hour at RT followed by ECL detection.



For full product information, images and publications, please visit our [website](#).