

# Kv1.2 antibody

**Cat. No. GTX16774**

<b>Host</b>	Rabbit
<b>Clonality</b>	Polyclonal
<b>Isotype</b>	IgG
<b>Applications</b>	WB, ICC/IF, IHC-Fr, LCI
<b>Reactivity</b>	Mouse, Rat, Guinea pig

References ( 1 )

Package

50 µl

## Applications

### Application Note

\*Optimal dilutions/concentrations should be determined by the researcher.

Suggested dilution	Recommended dilution
WB	Assay dependent
ICC/IF	Assay dependent
IHC-Fr	Assay dependent
LCI	Assay dependent

Not tested in other applications.

**Calculated MW** 57 kDa. ( [Note](#) )

## Properties

<b>Form</b>	Liquid
<b>Buffer</b>	PBS, 1% BSA
<b>Preservative</b>	0.05% Sodium azide
<b>Storage</b>	Store as concentrated solution. Centrifuge briefly prior to opening vial. For short-term storage (1-2 weeks), store at 4°C. For long-term storage, aliquot and store at -20°C or below. Avoid multiple freeze-thaw cycles.
<b>Concentration</b>	0.8 mg/ml (Please refer to the vial label for the specific concentration.)
<b>Immunogen</b>	Peptide (C)RDENEDMHGGGV, corresponding to amino acid residues 189-201 (1st extracellular loop) of rat KV1.2 (Accession : P63142).
<b>Purification</b>	Purified by antigen-affinity chromatography
<b>Conjugation</b>	Unconjugated



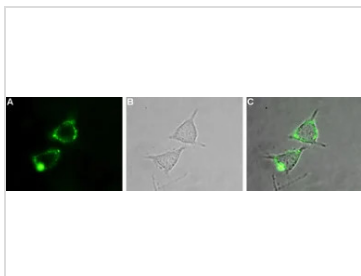
For full product information, images and publications, please visit our [website](#).

For laboratory research use only. Not for any clinical, therapeutic, or diagnostic use in humans or animals. Not for animal or human consumption.

## Note

Purchasers shall not, and agree not to enable third parties to, analyze, copy, reverse engineer or otherwise attempt to determine the structure or sequence of the product.

## DATA IMAGES



### GTX16774 LCI Image

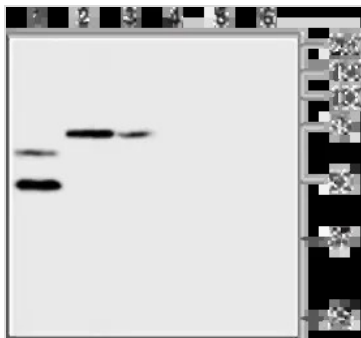
Live cell imaging analysis of live intact PC12 cells using GTX16774 Kv1.2 antibody.

Panel A : Primary antibody (Green)

Panel B : Live view of the cell

Panel C : Merged images of Panel A and B

Dilution : 1:50



### GTX16774 WB Image

WB analysis of rat heart membrane (lanes 1 and 4), mouse brain membrane (lanes 2 and 5) and rat brain membrane (lanes 3 and 6) lysates using GTX16774 Kv1.2 antibody preincubated with or without immunogen peptide.

Dilution : 1:200



For full product information, images and publications, please visit our [website](#).