

P2X2 antibody

Cat. No. GTX16789

Host	Rabbit
Clonality	Polyclonal
Isotype	IgG
Applications	WB, ICC/IF, IHC-P, IHC-Fr, FCM, IP
Reactivity	Human, Mouse, Rat

References (1)

Package

50 µl

Applications

Application Note

*Optimal dilutions/concentrations should be determined by the researcher.

Suggested dilution	Recommended dilution
WB	Assay dependent
ICC/IF	Assay dependent
IHC-P	Assay dependent
IHC-Fr	Assay dependent
FCM	Assay dependent
IP	Assay dependent

Not tested in other applications.

Calculated MW 53 kDa. ([Note](#))

Properties

Form	Liquid
Buffer	PBS, 1% BSA
Preservative	0.05% Sodium azide
Storage	Store as concentrated solution. Centrifuge briefly prior to opening vial. For short-term storage (1-2 weeks), store at 4°C. For long-term storage, aliquot and store at -20°C or below. Avoid multiple freeze-thaw cycles.
Concentration	0.9 mg/ml (Please refer to the vial label for the specific concentration.)
Immunogen	Peptide (C)SQQDSTSTDPKGLAQL, corresponding to amino acid residues 457-472 (Intracellular, C-terminus) of rat P2X2 receptor (Accession : P49653).
Purification	Purified by antigen-affinity chromatography
Conjugation	Unconjugated



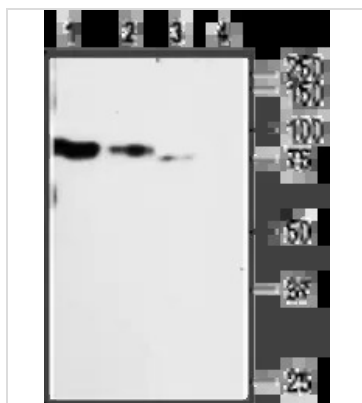
For full product information, images and publications, please visit our [website](#).

For laboratory research use only. Not for any clinical, therapeutic, or diagnostic use in humans or animals. Not for animal or human consumption.

Note

Purchasers shall not, and agree not to enable third parties to, analyze, copy, reverse engineer or otherwise attempt to determine the structure or sequence of the product.

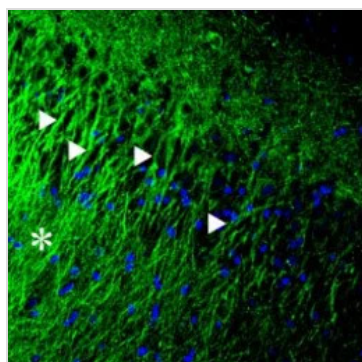
DATA IMAGES



GTx16789 WB Image

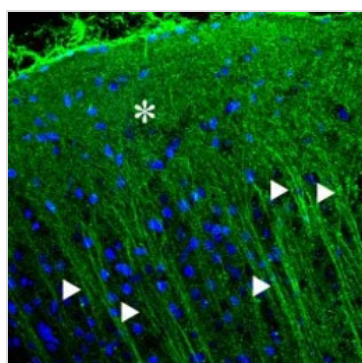
WB analysis of differentiated (lanes 1 and 3) and non-differentiated (lanes 2 and 4) PC12 cell lysates using GTx16789 P2X2 antibody preincubated with or without immunogen peptide.

Dilution : 1:200



GTx16789 IHC-Fr Image

IHC-Fr analysis of rat hippocampus tissue using GTx16789 P2X2 antibody. P2X2 receptor (green) appears in the apical dendrites (arrows) that extend into the striatum radiatum (asterisk). DAPI is used as the counterstain (blue).



GTx16789 IHC-Fr Image

IHC-Fr analysis of rat neocortex tissue using GTx16789 P2X2 antibody. P2X2 receptor (green) appears in axonal processes (arrows) that ascend toward the upper cortical layers (asterisk). DAPI is used as the counterstain (blue).



For full product information, images and publications, please visit our [website](https://www.genetex.com).