

# P2X5 antibody

**Cat. No. GTX16812**

<b>Host</b>	Rabbit
<b>Clonality</b>	Polyclonal
<b>Isotype</b>	IgG
<b>Applications</b>	WB, IHC-Fr, FCM
<b>Reactivity</b>	Human, Rat

**Package**

50 µl

## Applications

### Application Note

\*Optimal dilutions/concentrations should be determined by the researcher.

Suggested dilution	Recommended dilution
WB	Assay dependent
IHC-Fr	Assay dependent
FCM	Assay dependent

Not tested in other applications.

**Calculated MW** 51 kDa. ( [Note](#) )

## Properties

<b>Form</b>	Liquid
<b>Buffer</b>	PBS, 1% BSA
<b>Preservative</b>	0.05% Sodium azide
<b>Storage</b>	Store as concentrated solution. Centrifuge briefly prior to opening vial. For short-term storage (1-2 weeks), store at 4°C. For long-term storage, aliquot and store at -20°C or below. Avoid multiple freeze-thaw cycles.
<b>Concentration</b>	0.8 mg/ml (Please refer to the vial label for the specific concentration.)
<b>Immunogen</b>	Peptide (C)RENAIVNVKQSQLHPVKT, corresponding to amino acid residues 437-455 (Intracellular, C-terminus) of rat P2X5 receptor (Accession : P51578).
<b>Purification</b>	Purified by antigen-affinity chromatography
<b>Conjugation</b>	Unconjugated

### Note

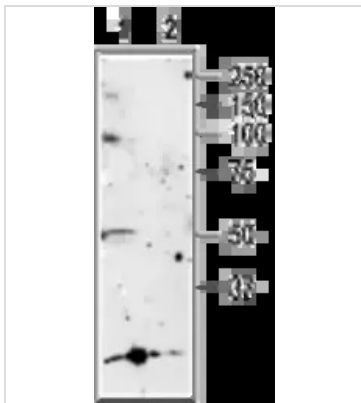
For laboratory research use only. Not for any clinical, therapeutic, or diagnostic use in humans or animals. Not for animal or human consumption.

Purchasers shall not, and agree not to enable third parties to, analyze, copy, reverse engineer or otherwise attempt to determine the structure or sequence of the product.



For full product information, images and publications, please visit our [website](#).

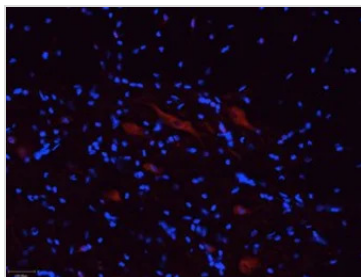
## DATA IMAGES



### GTX16812 WB Image

WB analysis of rat brain membrane lysate using GTX16812 P2X5 antibody preincubated with or without immunogen peptide.

Dilution : 1:200



### GTX16812 IHC-Fr Image

IHC-Fr analysis of rat spinal cord tissue using GTX16812 P2X5 antibody. P2RX5 staining (red) is specific for neurons in the anterior horn of the spinal cord. Hoechst 33342 is used as the counterstain.

Dilution : 1:100



For full product information, images and publications, please visit our [website](https://www.genetex.com).