

P2Y4 antibody

Cat. No. GTX16815

Host	Rabbit
Clonality	Polyclonal
Isotype	IgG
Applications	WB, ICC/IF, IHC-Fr, FCM, IP
Reactivity	Human, Mouse, Rat

Package

50 µl

Applications

Application Note

*Optimal dilutions/concentrations should be determined by the researcher.

Suggested dilution	Recommended dilution
WB	Assay dependent
ICC/IF	Assay dependent
IHC-Fr	Assay dependent
FCM	Assay dependent
IP	Assay dependent

Not tested in other applications.

Calculated MW 41 kDa. ([Note](#))

Properties

Form	Liquid
Buffer	PBS, 1% BSA, 5% Sucrose
Preservative	0.025% Sodium azide
Storage	Store as concentrated solution. Centrifuge briefly prior to opening vial. For short-term storage (1-2 weeks), store at 4°C. For long-term storage, aliquot and store at -20°C or below. Avoid multiple freeze-thaw cycles.
Concentration	0.9 mg/ml (Please refer to the vial label for the specific concentration.)
Immunogen	Peptide (C)HEES ISRWA DTHQD, corresponding to residues 337-350 (Intracellular, C-terminus) of rat P2RY4 (Accession : O35811).
Purification	Purified by antigen-affinity chromatography
Conjugation	Unconjugated



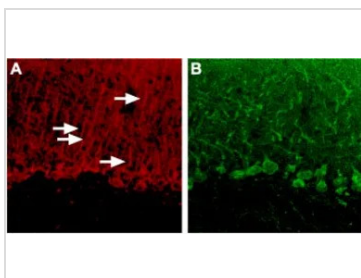
For full product information, images and publications, please visit our [website](#).

For laboratory research use only. Not for any clinical, therapeutic, or diagnostic use in humans or animals. Not for animal or human consumption.

Note

Purchasers shall not, and agree not to enable third parties to, analyze, copy, reverse engineer or otherwise attempt to determine the structure or sequence of the product.

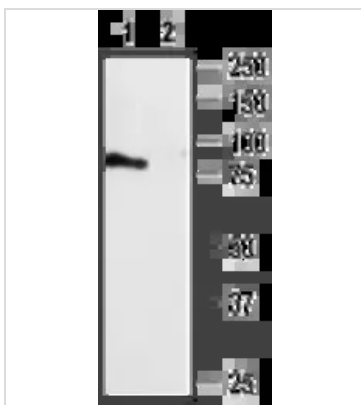
DATA IMAGES



GTX16815 IHC-Fr Image

IHC-Fr analysis of rat cerebellum tissue using GTX16815 P2Y4 antibody.

Panel A : P2RY4 (red) appears in astrocytic processes (arrows). B. In contrast, P2RY4 does not appear in Purkinje neuronal dendrites stained for calbindin D28k (green) in the same brain section. This demonstrates the restriction of P2RY4 to astrocytic fibers.



GTX16815 WB Image

WB analysis of rat brain membrane lysate using GTX16815 P2Y4 antibody preincubated with or without immunogen peptide.

Dilution : 1:300



For full product information, images and publications, please visit our [website](#).