

P2X7 antibody

Cat. No. GTX16827

| | |
|---------------------|------------------------------|
| Host | Rabbit |
| Clonality | Polyclonal |
| Isotype | IgG |
| Applications | WB, ICC/IF, IHC-Fr, FCM, LCI |
| Reactivity | Human, Mouse, Rat |

References (2)

Package

50 µl

Applications

Application Note

*Optimal dilutions/concentrations should be determined by the researcher.

| Suggested dilution | Recommended dilution |
|--------------------|----------------------|
| WB | Assay dependent |
| ICC/IF | Assay dependent |
| IHC-Fr | Assay dependent |
| FCM | Assay dependent |
| LCI | Assay dependent |

Not tested in other applications.

Calculated MW 68 kDa. ([Note](#))

Properties

| | |
|----------------------|--|
| Form | Liquid |
| Buffer | PBS, 1% BSA |
| Preservative | 0.05% Sodium azide |
| Storage | Store as concentrated solution. Centrifuge briefly prior to opening vial. For short-term storage (1-2 weeks), store at 4°C. For long-term storage, aliquot and store at -20°C or below. Avoid multiple freeze-thaw cycles. |
| Concentration | 0.8 mg/ml (Please refer to the vial label for the specific concentration.) |
| Immunogen | Peptide KKGWMDPQSKGIQTGRC, corresponding to amino acid residues 136-152 (Extracellular loop) of mouse P2X7 receptor (Accession number Q9Z1M0). |
| Purification | Purified by antigen-affinity chromatography |
| Conjugation | Unconjugated |



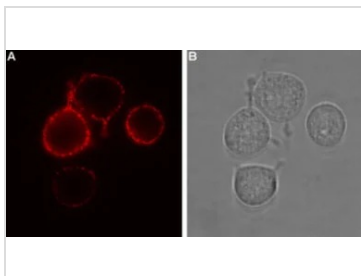
For full product information, images and publications, please visit our [website](#).

For laboratory research use only. Not for any clinical, therapeutic, or diagnostic use in humans or animals. Not for animal or human consumption.

Note

Purchasers shall not, and agree not to enable third parties to, analyze, copy, reverse engineer or otherwise attempt to determine the structure or sequence of the product.

DATA IMAGES



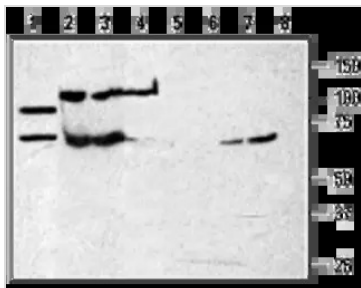
GTX16827 LCI Image

Live cell imaging analysis of intact living RBL cells using GTX16827 P2X7 antibody.

Panel A : Primary antibody

Panel B : Live view of the cell

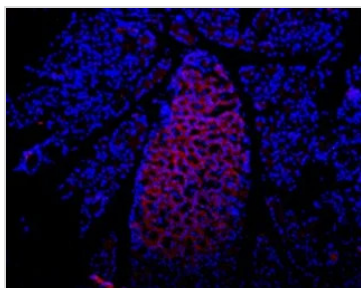
Dilution : 1:100



GTX16827 WB Image

WB analysis of rat brain membrane (lanes 1,5), K562 (lanes 2 and 6), WEHI-231 (lanes 3 and 7), and HL-60 (lanes 4 and 8) lysates using GTX16827 P2X7 antibody preincubated with or without immunogen peptide.

Dilution : 1:200



GTX16827 IHC-Fr Image

IHC-Fr analysis of rat pancreas tissue using GTX16827 P2X7 antibody. Staining is present in endocrine cells of the Isle of Langerhans. Hoechst 33342 is used as the counterstain.

Dilution : 1:100



For full product information, images and publications, please visit our [website](#).