

GPR86 antibody

Cat. No. GTX16882

Host	Rabbit
Clonality	Polyclonal
Isotype	IgG
Applications	WB, ICC/IF, IHC-P, FCM
Reactivity	Human, Mouse, Rat

Package
50 µl

Applications

Application Note

*Optimal dilutions/concentrations should be determined by the researcher.

Suggested dilution	Recommended dilution
WB	Assay dependent
ICC/IF	Assay dependent
IHC-P	Assay dependent
FCM	Assay dependent

Not tested in other applications.

Calculated MW 41 kDa. ([Note](#))

Properties

Form	Liquid
Buffer	PBS, 1% BSA
Preservative	0.05% Sodium azide
Storage	Store as concentrated solution. Centrifuge briefly prior to opening vial. For short-term storage (1-2 weeks), store at 4°C. For long-term storage, aliquot and store at -20°C or below. Avoid multiple freeze-thaw cycles.
Concentration	0.75 mg/ml (Please refer to the vial label for the specific concentration.)
Immunogen	Peptide DRFLKIIRPLRNIFLK(C), corresponding to amino acid residues 119-134 (2nd intracellular loop) of human P2RY13 (Accession : Q9BPV8).
Purification	Purified by antigen-affinity chromatography
Conjugation	Unconjugated



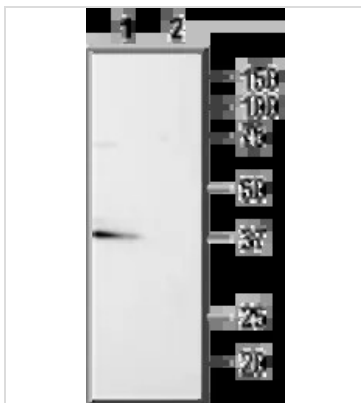
For full product information, images and publications, please visit our [website](#).

For laboratory research use only. Not for any clinical, therapeutic, or diagnostic use in humans or animals. Not for animal or human consumption.

Note

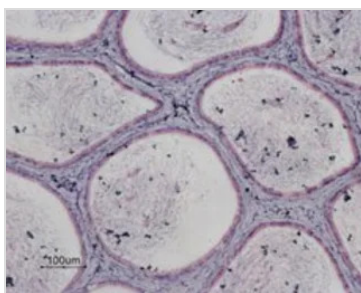
Purchasers shall not, and agree not to enable third parties to, analyze, copy, reverse engineer or otherwise attempt to determine the structure or sequence of the product.

DATA IMAGES

**GTX16882 WB Image**

WB analysis of rat brain membrane lysate using GTX16882 GPR86 antibody preincubated with or without immunogen peptide.

Dilution : 1:200

**GTX16882 IHC-P Image**

IHC-P analysis of rat testis tissue using GTX16882 GPR86 antibody. Strong and high specific staining of the epithelial cells is shown. Hematoxylin is used as the counterstain.

Dilution : 1:50



For full product information, images and publications, please visit our [website](#).