

GPR105 antibody

Cat. No. GTX16887

Host	Rabbit
Clonality	Polyclonal
Isotype	IgG
Application	WB, FACS, IHC
Reactivity	Human, Mouse, Rat

Package

50 µl

APPLICATION

Application Note

*Optimal dilutions/concentrations should be determined by the researcher.

Suggested dilution	Recommended dilution
WB	Assay dependent
FACS	Assay dependent
IHC	Assay dependent

Not tested in other applications.

Calculated MW 39 kDa. ([Note](#))

PROPERTIES

Form	Liquid
Buffer	PBS, 1% BSA
Preservative	0.05% Sodium azide
Storage	Store as concentrated solution. Centrifuge briefly prior to opening vial. For short-term storage (1-2 weeks), store at 4°C. For long-term storage, aliquot and store at -20°C or below. Avoid multiple freeze-thaw cycles.
Concentration	0.8 mg/ml (Please refer to the vial label for the specific concentration.)
Immunogen	Peptide CIELKSELGRKWHKASN, corresponding to amino acid residues 172-188 (2nd extracellular loop) of human P2RY14 (Accession : Q15391).
Purification	Purified by antigen-affinity chromatography
Conjugation	Unconjugated

Note

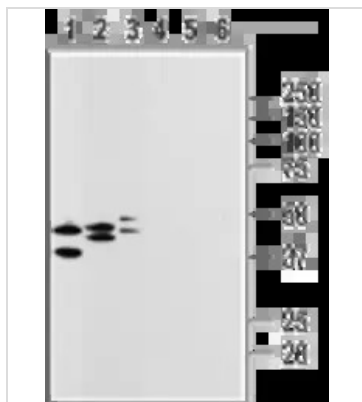
For laboratory research use only. Not for any clinical, therapeutic, or diagnostic use in humans or animals. Not for animal or human consumption.

Purchasers shall not, and agree not to enable third parties to, analyze, copy, reverse engineer or otherwise attempt to determine the structure or sequence of the product.



For full product information, images and publications, please visit our [website](#).

DATA IMAGES



GTX16887 WB Image

WB analysis of rat heart membranes (lanes 1 and 4), brain (lanes 2 and 5), and lung (lanes 3 and 6) lysates using GTX16887 GPR105 antibody preincubated with or without immunogen peptide.

Dilution : 1:200



For full product information, images and publications, please visit our [website](https://www.genetex.com).