

LDL Receptor antibody [15C8]

Cat. No. GTX16897

Host	Mouse
Clonality	Monoclonal
Isotype	IgG2a
Applications	WB, ICC/IF, IHC-Fr, FCM, IP, ELISA
Reactivity	Human, Bovine

Package
50 µg

Applications

Application Note

*Optimal dilutions/concentrations should be determined by the researcher.

Suggested dilution	Recommended dilution
WB	1-5 µg/ml
ICC/IF	1-5 µg/ml
IHC-Fr	1-5 µg/ml
FCM	Assay dependent
IP	1-2 µg/ml
ELISA	0.5-1 µg/ml

Note : It needs to avoid the buffer that contains EDTA because the buffer of this antibody includes 2 mM Ca²⁺.

Not tested in other applications.

Product Note This clone has been reported to bind best to the unreduced LDL-R.

Properties

Form	Liquid
Buffer	50mM Sodium Phosphate, 0.2% Gelatin
Preservative	0.1% Sodium azide
Storage	Store as concentrated solution. Centrifuge briefly prior to opening vial. Store at 4°C. DO NOT FREEZE.
Concentration	0.1 mg/ml (Please refer to the vial label for the specific concentration.)
Immunogen	A tryptic digest of low density lipoprotein receptor from bovine
Conjugation	Unconjugated



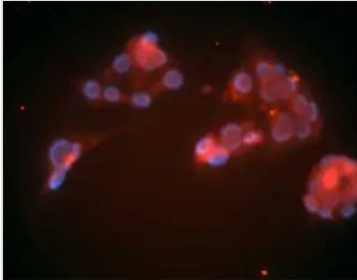
For full product information, images and publications, please visit our [website](#).

For laboratory research use only. Not for any clinical, therapeutic, or diagnostic use in humans or animals. Not for animal or human consumption.

Note

Purchasers shall not, and agree not to enable third parties to, analyze, copy, reverse engineer or otherwise attempt to determine the structure or sequence of the product.

DATA IMAGES

**GTX16897 ICC/IF Image**

ICC: Human LDL in HepG2 cells fixed in methanol.



For full product information, images and publications, please visit our [website](#).