

HA tag antibody [12CA5]

Cat. No. GTX16918

Host	Mouse
Clonality	Monoclonal
Isotype	IgG2b
Applications	WB, IP
Reactivity	Species independent

References (4)

Package

200 µl

Applications

Application Note

*Optimal dilutions/concentrations should be determined by the researcher.

Suggested dilution	Recommended dilution
WB	1:1000
IP	Assay dependent

Not tested in other applications.

Properties

Form	Liquid
Buffer	PBS
Preservative	0.09% Sodium azide
Storage	Store as concentrated solution. Centrifuge briefly prior to opening vial. For short-term storage (1-2 weeks), store at 4°C. For long-term storage, aliquot and store at -20°C or below. Avoid multiple freeze-thaw cycles.
Concentration	Batch dependent (Please refer to the vial label for the specific concentration.)
Immunogen	KLH conjugated synthetic peptide encoding HA tag (YPYDVPDYA) was used as antigen.
Purification	Protein G purified, followed by dialysis against PBS.
Conjugation	Unconjugated

Note

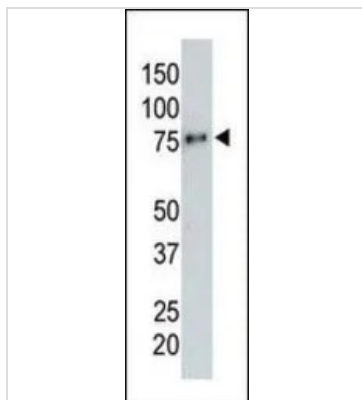
For laboratory research use only. Not for any clinical, therapeutic, or diagnostic use in humans or animals. Not for animal or human consumption.

Purchasers shall not, and agree not to enable third parties to, analyze, copy, reverse engineer or otherwise attempt to determine the structure or sequence of the product.



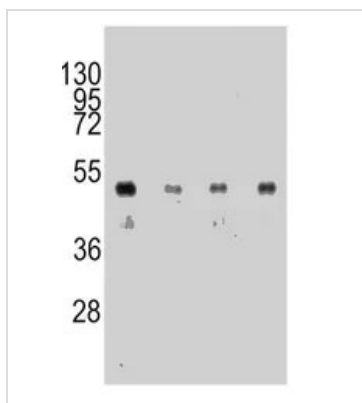
For full product information, images and publications, please visit our [website](#).

DATA IMAGES



GTX16918 WB Image

WB analysis of HA-tagged recombinant protein using GTX16918 HA tag antibody [12CA5].



GTX16918 WB Image

WB analysis of HA-tag recombinant protein using GTX16918 HA tag antibody [12CA5].



For full product information, images and publications, please visit our [website](#).