

P2Y1 antibody

Cat. No. GTX16924

| | |
|---------------------|------------------------------|
| Host | Rabbit |
| Clonality | Polyclonal |
| Isotype | IgG |
| Applications | WB, ICC/IF, IHC-Fr, FCM, LCI |
| Reactivity | Human, Mouse, Rat |

Package

50 µl

Applications

Application Note

*Optimal dilutions/concentrations should be determined by the researcher.

| Suggested dilution | Recommended dilution |
|--------------------|----------------------|
| WB | Assay dependent |
| ICC/IF | Assay dependent |
| IHC-Fr | Assay dependent |
| FCM | Assay dependent |
| LCI | Assay dependent |

Not tested in other applications.

Calculated MW 42 kDa. ([Note](#))

Properties

| | |
|----------------------|----------------------------------------------------------------------------------------------------------------------------------------------------------------------------------------------------------------------------|
| Form | Liquid |
| Buffer | PBS, 1% BSA |
| Preservative | 0.05% Sodium azide |
| Storage | Store as concentrated solution. Centrifuge briefly prior to opening vial. For short-term storage (1-2 weeks), store at 4°C. For long-term storage, aliquot and store at -20°C or below. Avoid multiple freeze-thaw cycles. |
| Concentration | 0.8 mg/ml (Please refer to the vial label for the specific concentration.) |
| Immunogen | Peptide SDEYLRSYFIYSMC, corresponding to amino acid residues 207-220 (2nd extracellular loop) of human P2RY1 (Accession : P47900). |
| Purification | Purified by antigen-affinity chromatography |
| Conjugation | Unconjugated |



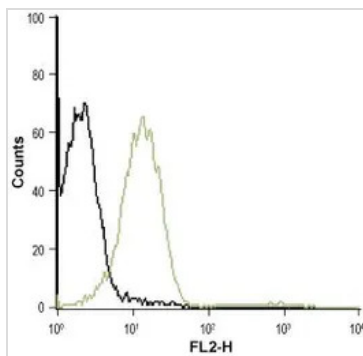
For full product information, images and publications, please visit our [website](#).

For laboratory research use only. Not for any clinical, therapeutic, or diagnostic use in humans or animals. Not for animal or human consumption.

Note

Purchasers shall not, and agree not to enable third parties to, analyze, copy, reverse engineer or otherwise attempt to determine the structure or sequence of the product.

DATA IMAGES



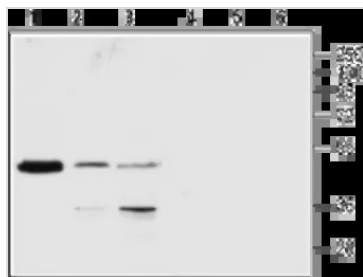
GTx16924 FCM Image

FACS analysis of Jurkat cells using GTx16924 P2Y1 antibody.

Black : Unstained cell

Green : Cell staining with primary antibody

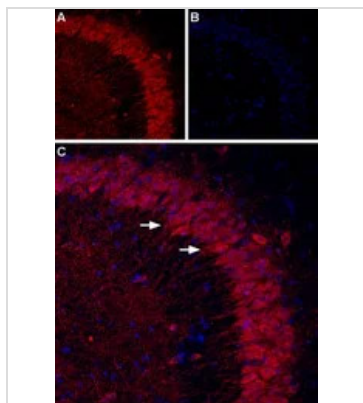
Antibody amount : 5 µg antibody / 0.5-1 x 10⁶ cells



GTx16924 WB Image

WB analysis of rat brain (lanes 1 and 4), Jurkat (lanes 2 and 5) and K-562 (lanes 3 and 6) lysates using GTx16924 P2Y1 antibody preincubated with or without immunogen peptide.

Dilution : 1:200



GTx16924 IHC-Fr Image

IHC-Fr analysis of mouse hippocampus tissue using GTx16924 P2Y1 antibody.

Panel A : P2RY1 (red) appears in the pyramidal layer (arrows).

Panel B : Nuclei staining using DAPI as the counterstain (blue).

Panel C : Merged images of panels A and B.



For full product information, images and publications, please visit our [website](https://www.genetex.com).