

P2X1 antibody

Cat. No. GTX16925

| | |
|--------------|------------------------------|
| Host | Rabbit |
| Clonality | Polyclonal |
| Isotype | IgG |
| Applications | WB, ICC/IF, IHC-Fr, FCM, LCI |
| Reactivity | Human, Mouse, Rat |

Package

50 µl

Applications

Application Note

*Optimal dilutions/concentrations should be determined by the researcher.

| Suggested dilution | Recommended dilution |
|--------------------|----------------------|
| WB | Assay dependent |
| ICC/IF | Assay dependent |
| IHC-Fr | Assay dependent |
| FCM | Assay dependent |
| LCI | Assay dependent |

Not tested in other applications.

Calculated MW 45 kDa. ([Note](#))

Properties

| | |
|---------------|--|
| Form | Liquid |
| Buffer | PBS, 1% BSA |
| Preservative | 0.05% Sodium azide |
| Storage | Store as concentrated solution. Centrifuge briefly prior to opening vial. For short-term storage (1-2 weeks), store at 4°C. For long-term storage, aliquot and store at -20°C or below. Avoid multiple freeze-thaw cycles. |
| Concentration | 0.8 mg/ml (Please refer to the vial label for the specific concentration.) |
| Immunogen | Peptide CRPIYEFHGLYEEK, corresponding to amino acid residues 270-283 (Extracellular loop) of human P2X1 receptor (Accession : P51575). |
| Purification | Purified by antigen-affinity chromatography |
| Conjugation | Unconjugated |

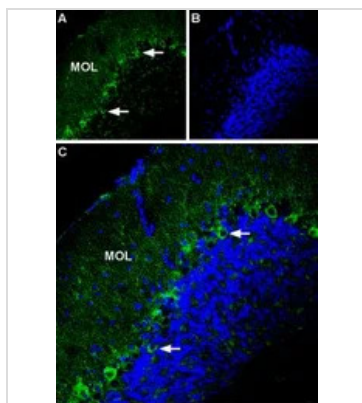


For full product information, images and publications, please visit our [website](#).

For laboratory research use only. Not for any clinical, therapeutic, or diagnostic use in humans or animals. Not for animal or human consumption.

Note

Purchasers shall not, and agree not to enable third parties to, analyze, copy, reverse engineer or otherwise attempt to determine the structure or sequence of the product.

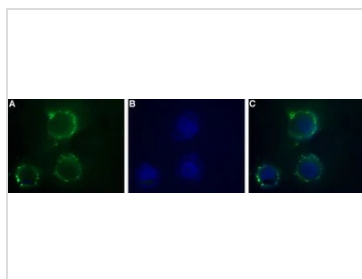
DATA IMAGES

GTX16925 IHC-Fr Image

IHC-Fr analysis of mouse cerebellum tissue using GTX16925 P2X1 antibody.

Panel A : Most of P2RX1 (green) appears in fine processes in the molecular layer (MOL) and in Purkinje cells (arrows show examples).

Panel B : DAPI is used as the counterstain (blue).

Panel C : Merge of A and B.


GTX16925 LCI Image

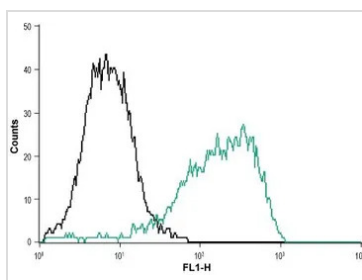
Live cell imaging analysis of SH-SY5Y cells using GTX16925 P2X1 antibody.

Panel A : Primary antibody (red)

Panel B : DAPI for nuclear staining (blue)

Panel C : Merged images of Panel A and B

Dilution : 1:50


GTX16925 FCM Image

FACS analysis of MEG-O1 cells using GTX16925 P2X1 antibody.

Black : Unstained cell

Green : Cell staining with primary antibody

Antibody amount : 10 µg antibody / 1 x 10⁶ cells



For full product information, images and publications, please visit our [website](#).