

CD3 antibody (ready-to-use)

Cat. No. GTX16930

Host	Rabbit
Clonality	Polyclonal
Isotype	IgG
Applications	IHC-P
Reactivity	Human

Package
6 ml

Applications

Application Note

*Optimal dilutions/concentrations should be determined by the researcher.

Suggested dilution	Recommended dilution
IHC-P	Assay dependent

Note : Recommendations for antigen retrieval : Citrate Buffer pH 6.0

Not tested in other applications.

Product Note

This antibody reacts with intracytoplasmic portion of the CD3 antigen on the T cells. It stains T cells in cortex as well as medulla of the thymus and lymphoid tissues. This antibody also labels T cell neoplasm, malignant histiocytes and Reed-Sternberg cells in Hodgkin disease.

Properties

Form	Liquid
Buffer	PBS
Preservative	0.09% Sodium azide
Storage	Store as concentrated solution. Centrifuge briefly prior to opening vial. Store at 4°C.
Concentration	Batch dependent (Please refer to the vial label for the specific concentration.)
Immunogen	Synthetic human CD3 polypeptide conjugated to bovine serum albumin.
Purification	Purified IgG
Conjugation	Unconjugated

Note

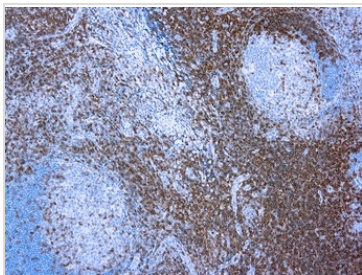
For laboratory research use only. Not for any clinical, therapeutic, or diagnostic use in humans or animals. Not for animal or human consumption.

Purchasers shall not, and agree not to enable third parties to, analyze, copy, reverse engineer or otherwise attempt to determine the structure or sequence of the product.



For full product information, images and publications, please visit our [website](#).

DATA IMAGES

**GTX16930 IHC-P Image**

IHC-P analysis of human tonsil tissue using GTX16930 CD3 antibody (ready-to-use).



For full product information, images and publications, please visit our [website](#).