

P2X2 antibody

Cat. No. GTX16933

Host	Rabbit
Clonality	Polyclonal
Isotype	IgG
Applications	WB, ICC/IF, LCI
Reactivity	Mouse, Rat

Package

50 µl

Applications

Application Note

*Optimal dilutions/concentrations should be determined by the researcher.

Suggested dilution	Recommended dilution
WB	Assay dependent
ICC/IF	Assay dependent
LCI	Assay dependent

Not tested in other applications.

Calculated MW	53 kDa. (Note)
Product Note	We do not recommend use of this product for Human samples.

Properties

Form	Liquid
Buffer	PBS, 1% BSA
Preservative	0.05% Sodium azide
Storage	Store as concentrated solution. Centrifuge briefly prior to opening vial. For short-term storage (1-2 weeks), store at 4°C. For long-term storage, aliquot and store at -20°C or below. Avoid multiple freeze-thaw cycles.
Concentration	0.85 mg/ml (Please refer to the vial label for the specific concentration.)
Immunogen	Peptide (C)KSDYLNKSTFDQDS, corresponding to amino acid residues 207-220 (Extracellular) of rat P2X2 with replacement of cysteine 214 (C214) with serine (*S) (Accession : P49653).
Purification	Purified by antigen-affinity chromatography
Conjugation	Unconjugated



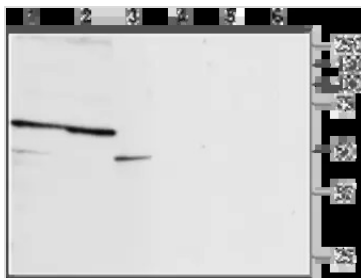
For full product information, images and publications, please visit our [website](#).

For laboratory research use only. Not for any clinical, therapeutic, or diagnostic use in humans or animals. Not for animal or human consumption.

Note

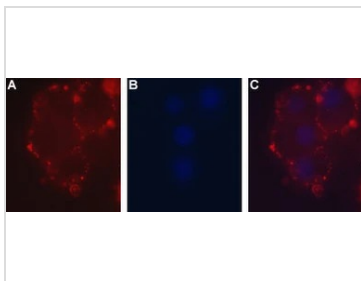
Purchasers shall not, and agree not to enable third parties to, analyze, copy, reverse engineer or otherwise attempt to determine the structure or sequence of the product.

DATA IMAGES



GTx16933 WB Image

WB analysis of rat brain membrane (lanes 1 and 4), mouse brain membrane (lanes 2 and 5), and PC12 cells (lanes 3 and 6) lysates using GTx16933 P2X2 antibody preincubated with or without immunogen peptide.
Dilution : 1:200



GTx16933 LCI Image

Live cell imaging analysis of intact living PC12 cells using GTx16933 P2X2 antibody.
Panel A : Primary antibody (red)
Panel B : DAPI for nuclear staining (blue)
Panel C : Merged images of Panel A and B
Dilution : 1:50



For full product information, images and publications, please visit our [website](#).