

Nucleolin antibody

Cat. No. GTX16940

| | |
|-------------|---------------------------------------|
| Host | Rabbit |
| Clonality | Polyclonal |
| Isotype | IgG |
| Application | WB, ICC/IF, IHC-P, ChIP assay, EM, IM |
| Reactivity | Human, Mouse, Rat |

Reference (1)

Package

100 µl

APPLICATION

Application Note

*Optimal dilutions/concentrations should be determined by the researcher.

| Suggested dilution | Recommended dilution |
|--------------------|----------------------|
| WB | 1:4000 |
| ICC/IF | 1:50 - 1:100 |
| IHC-P | 1:50 - 1:100 |
| ChIP assay | Assay dependent |
| EM | 1:10 - 1:500 |
| IM | Assay dependent |

Not tested in other applications.

Calculated MW 77 kDa. ([Note](#))

PROPERTIES

| | |
|--------------|--|
| Form | Liquid |
| Buffer | Serum |
| Preservative | 0.1% Sodium azide |
| Storage | Store as concentrated solution. Centrifuge briefly prior to opening vial. For short-term storage (1-2 weeks), store at 4°C. For long-term storage, aliquot and store at -20°C or below. Avoid multiple freeze-thaw cycles. |
| Immunogen | A fusion protein containing amino acids 284-709 of human Nucleolin. [UniProt# P19338] |
| Purification | Unpurified |
| Conjugation | Unconjugated |

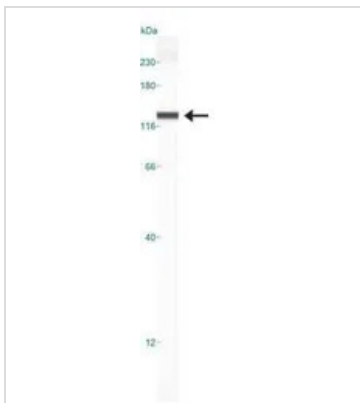
For full product information, images and publications, please visit our [website](#).

For laboratory research use only. Not for any clinical, therapeutic, or diagnostic use in humans or animals. Not for animal or human consumption.

Note

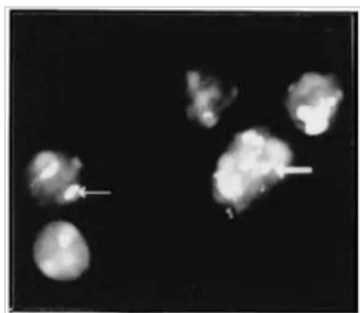
Purchasers shall not, and agree not to enable third parties to, analyze, copy, reverse engineer or otherwise attempt to determine the structure or sequence of the product.

DATA IMAGES



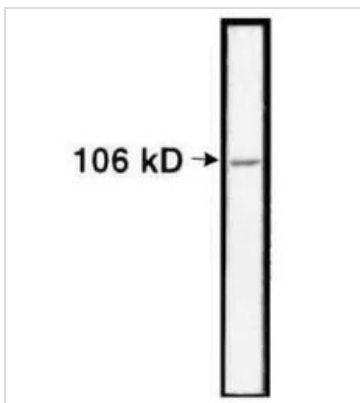
GTx16940 WB Image

WB analysis of HeLa cell lysate using GTx16940 Nucleolin antibody.



GTx16940 ICC/IF Image

ICC/IF analysis of murine pre-B cells using GTx16940 Nucleolin antibody.



GTx16940 WB Image

WB analysis of PD31 nuclear extracts using GTx16940 Nucleolin antibody.



For full product information, images and publications, please visit our [website](https://www.genetex.com).