

SCN1B antibody

Cat. No. GTX16973

Host	Rabbit
Clonality	Polyclonal
Isotype	IgG
Applications	WB, ICC/IF, IHC-Fr, LCI
Reactivity	Mouse, Rat

Package

50 µl

Applications

Application Note

*Optimal dilutions/concentrations should be determined by the researcher.

Suggested dilution	Recommended dilution
WB	Assay dependent
ICC/IF	Assay dependent
IHC-Fr	Assay dependent
LCI	Assay dependent

Not tested in other applications.

Calculated MW 25 kDa. ([Note](#))

Properties

Form	Liquid
Buffer	PBS, 1% BSA
Preservative	0.05% Sodium azide
Storage	Store as concentrated solution. Centrifuge briefly prior to opening vial. For short-term storage (1-2 weeks), store at 4°C. For long-term storage, aliquot and store at -20°C or below. Avoid multiple freeze-thaw cycles.
Concentration	0.85 mg/ml (Please refer to the vial label for the specific concentration.)
Immunogen	Peptide CKRRSETTAETFE, corresponding to amino acid residues 43-56 (Extracellular, N-terminus) of voltage-gated Na ⁺ channels (Accession : Q00954).
Purification	Purified by antigen-affinity chromatography
Conjugation	Unconjugated



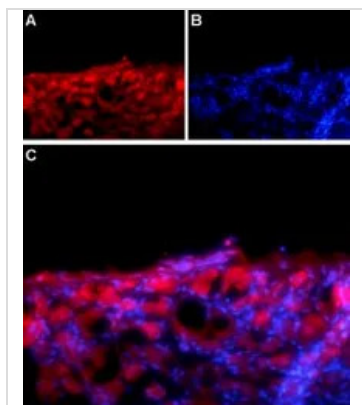
For full product information, images and publications, please visit our [website](#).

For laboratory research use only. Not for any clinical, therapeutic, or diagnostic use in humans or animals. Not for animal or human consumption.

Note

Purchasers shall not, and agree not to enable third parties to, analyze, copy, reverse engineer or otherwise attempt to determine the structure or sequence of the product.

DATA IMAGES



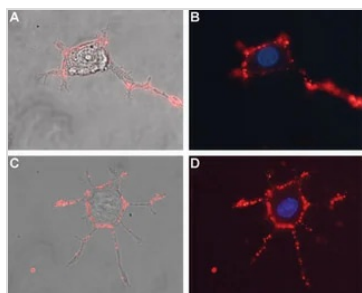
GTX16973 IHC-Fr Image

IHC-Fr analysis of rat DRG tissue using GTX16973 SCN1B antibody.

Panel A : NaVβ1 (red) appears in the cell bodies of the DRG neurons.

Panel B : Nuclear staining using DAPI (blue).

Panel C : Merged image of A and B.



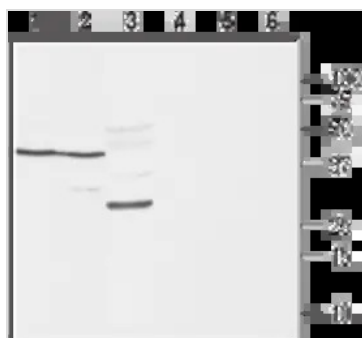
GTX16973 LCI Image

Live cell imaging analysis of live and intact differentiated PC12 cells using GTX16973 SCN1B antibody. PC12 differentiation was induced by Native mouse NGF 2.5S protein (>95%).

Red : Primary antibody

Blue : DAPI for nuclear staining

Dilution : 1:50



GTX16973 WB Image

WB analysis of rat brain (lanes 1 and 4), mouse brain (lanes 2 and 5) and rat skeletal muscle (lanes 3 and 6) tissue lysates using GTX16973 SCN1B antibody preincubated with or without immunogen peptide.

Dilution : 1:400



For full product information, images and publications, please visit our [website](#).