

ULK1 antibody

Cat. No. GTX16974

| | |
|---------------------|-------------------|
| Host | Rabbit |
| Clonality | Polyclonal |
| Isotype | IgG |
| Applications | WB, ICC/IF |
| Reactivity | Human, Mouse, Rat |

Package
100 µl

Applications

Application Note

*Optimal dilutions/concentrations should be determined by the researcher.

| Suggested dilution | Recommended dilution |
|--------------------|----------------------|
| WB | 1:500 - 1:1000 |
| ICC/IF | 1:10 - 1:100 |

Not tested in other applications.

Calculated MW 113 kDa. ([Note](#))

Properties

| | |
|----------------------|--|
| Form | Liquid |
| Buffer | PBS, 50% Glycerol |
| Preservative | 0.02% Sodium azide |
| Storage | Store as concentrated solution. Centrifuge briefly prior to opening vial. For short-term storage (1-2 weeks), store at 4°C. For long-term storage, aliquot and store at -20°C or below. Avoid multiple freeze-thaw cycles. |
| Concentration | Batch dependent (Please refer to the vial label for the specific concentration.) |
| Immunogen | A synthetic peptide of human ULK1 |
| Purification | Purified by affinity chromatography |
| Conjugation | Unconjugated |

Note

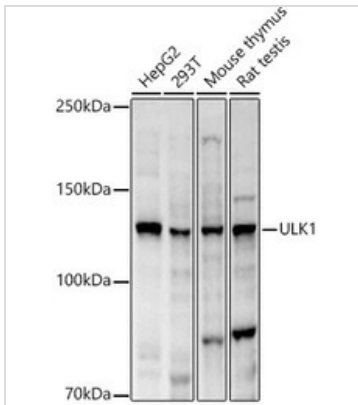
For laboratory research use only. Not for any clinical, therapeutic, or diagnostic use in humans or animals. Not for animal or human consumption.

Purchasers shall not, and agree not to enable third parties to, analyze, copy, reverse engineer or otherwise attempt to determine the structure or sequence of the product.



For full product information, images and publications, please visit our [website](#).

DATA IMAGES

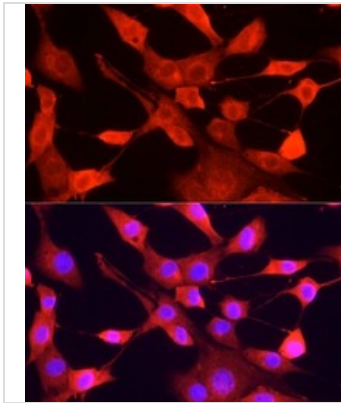


GTX16974 WB Image

WB analysis of various sample lysates using GTX16974 ULK1 antibody.

Dilution : 1:2000

Loading : 25µg per lane



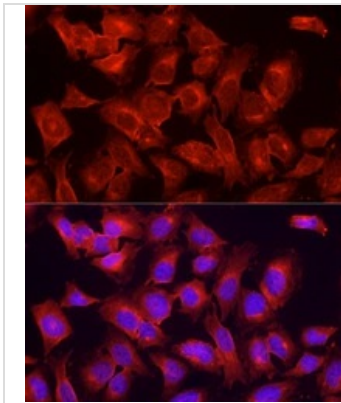
GTX16974 ICC/IF Image

ICC/IF analysis of NIH/3T3 cells using GTX16974 ULK1 antibody.

Orange : Primary antibody

Blue : DAPI

Dilution : 1:200



GTX16974 ICC/IF Image

ICC/IF analysis of HeLa cells using GTX16974 ULK1 antibody.

Orange : Primary antibody

Blue : DAPI

Dilution : 1:200



For full product information, images and publications, please visit our [website](https://www.genetex.com).