

IL22 Receptor alpha 1 antibody

Cat. No. GTX16978

Host	Rabbit
Clonality	Polyclonal
Isotype	IgG
Applications	WB, ICC/IF, IHC-P, ELISA
Reactivity	Human, Rat

References (1)

Package

100 µg

Applications

Application Note

*Optimal dilutions/concentrations should be determined by the researcher.

Suggested dilution	Recommended dilution
WB	0.5-1 µg/mL
ICC/IF	10 µg/mL
IHC-P	5 µg/mL
ELISA	Assay dependent

Not tested in other applications.

Calculated MW 63 kDa. ([Note](#))

Properties

Form	Liquid
Buffer	PBS
Preservative	0.02% Sodium azide
Storage	Store as concentrated solution. Centrifuge briefly prior to opening vial. For short-term storage (1-2 weeks), store at 4°C. For long-term storage, aliquot and store at -20°C or below. Avoid multiple freeze-thaw cycles.
Concentration	1 mg/ml (Please refer to the vial label for the specific concentration.)
Immunogen	IL-22 receptor antibody was raised against a synthetic peptide corresponding to amino acids near the amino terminus of human IL-22 receptor precursor. The immunogen is located within the first 50 amino acids of IL-22 Receptor.
Purification	Purified by antigen-affinity chromatography
Conjugation	Unconjugated



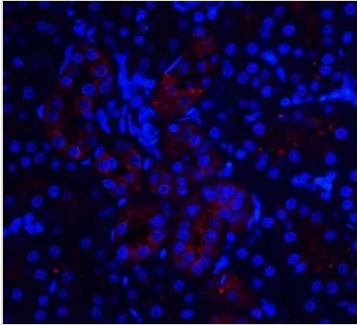
For full product information, images and publications, please visit our [website](#).

For laboratory research use only. Not for any clinical, therapeutic, or diagnostic use in humans or animals. Not for animal or human consumption.

Note

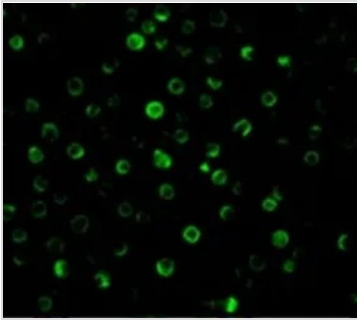
Purchasers shall not, and agree not to enable third parties to, analyze, copy, reverse engineer or otherwise attempt to determine the structure or sequence of the product.

DATA IMAGES



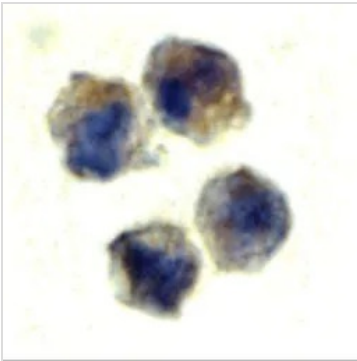
GTx16978 IHC-P Image

IHC-P analysis of rat kidney tissue using GTx16978 IL22 Receptor alpha 1 antibody.
Working concentration : 20 µg/ml



GTx16978 ICC/IF Image

ICC/IF analysis of HepG2 cells using GTx16978 IL22 Receptor alpha 1 antibody.
Working concentration : 10 µg/ml



GTx16978 ICC/IF Image

ICC/IF analysis of HepG2 cells using GTx16978 IL22 Receptor alpha 1 antibody.
Working concentration : 10 µg/ml



For full product information, images and publications, please visit our [website](#).