

BIRC6 antibody

Cat. No. GTX16980

Host	Rabbit
Clonality	Polyclonal
Isotype	IgG
Applications	IHC-P, ELISA
Reactivity	Human

Package
100 µg

Applications

Application Note

*Optimal dilutions/concentrations should be determined by the researcher.

Suggested dilution	Recommended dilution
IHC-P	5 µg/mL
ELISA	Assay dependent

Not tested in other applications.

Product Note

BRUCE antibody is human specific. Multiple isoforms of BRUCE are known to exist.

Properties

Form	Liquid
Buffer	PBS
Preservative	0.02% Sodium azide
Storage	Store as concentrated solution. Centrifuge briefly prior to opening vial. For short-term storage (1-2 weeks), store at 4°C. For long-term storage, aliquot and store at -20°C or below. Avoid multiple freeze-thaw cycles.
Concentration	1 mg/ml (Please refer to the vial label for the specific concentration.)
Immunogen	BIRC6 / Apollon antibody was raised against a 17 amino acid synthetic peptide near the carboxy terminus of human BIRC6 / Apollon. The immunogen is located within amino acids 4760 - 4810 of BIRC6 / Apollon.
Purification	Purified by antigen-affinity chromatography
Conjugation	Unconjugated

Note

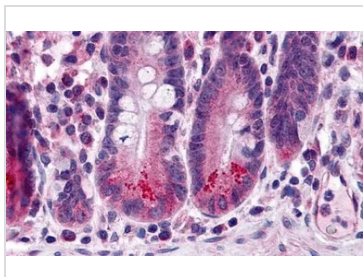
For laboratory research use only. Not for any clinical, therapeutic, or diagnostic use in humans or animals. Not for animal or human consumption.

Purchasers shall not, and agree not to enable third parties to, analyze, copy, reverse engineer or otherwise attempt to determine the structure or sequence of the product.



For full product information, images and publications, please visit our [website](#).

DATA IMAGES



GTX16980 IHC-P Image

IHC-P analysis of human small intestine tissue using GTX16980 BIRC6 antibody.

Working concentration : 5 µg/ml



For full product information, images and publications, please visit our [website](#).