

EMX2 antibody

Cat. No. GTX16990

| | |
|--------------|--------------|
| Host | Rabbit |
| Clonality | Polyclonal |
| Isotype | IgG |
| Applications | IHC-P, ELISA |
| Reactivity | Human |

Package
100 µg

Applications

Application Note

*Optimal dilutions/concentrations should be determined by the researcher.

| Suggested dilution | Recommended dilution |
|--------------------|----------------------|
| IHC-P | 5 µg/mL |
| ELISA | Assay dependent |

Not tested in other applications.

Product Note

At least two isoforms of EMX2 are known to exist; this antibody will detect both isoforms. EMX2 antibody is predicted to not cross-react with EMX1.

Properties

| | |
|---------------|----------------------------------------------------------------------------------------------------------------------------------------------------------------------------------------------------------------------------|
| Form | Liquid |
| Buffer | PBS |
| Preservative | 0.02% Sodium azide |
| Storage | Store as concentrated solution. Centrifuge briefly prior to opening vial. For short-term storage (1-2 weeks), store at 4°C. For long-term storage, aliquot and store at -20°C or below. Avoid multiple freeze-thaw cycles. |
| Concentration | 1 mg/ml (Please refer to the vial label for the specific concentration.) |
| Immunogen | EMX2 antibody was raised against an 16 amino acid synthetic peptide near the amino terminus of human EMX2. The immunogen is located within the first 50 amino acids of EMX2. |
| Purification | Purified by antigen-affinity chromatography |
| Conjugation | Unconjugated |

Note

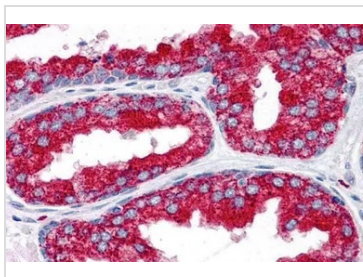
For laboratory research use only. Not for any clinical, therapeutic, or diagnostic use in humans or animals. Not for animal or human consumption.

Purchasers shall not, and agree not to enable third parties to, analyze, copy, reverse engineer or otherwise attempt to determine the structure or sequence of the product.



For full product information, images and publications, please visit our [website](#).

DATA IMAGES



GTX16990 IHC-P Image

IHC-P analysis of human prostate tissue using GTX16990 EMX2 antibody.

Working concentration : 5 µg/ml



For full product information, images and publications, please visit our [website](#).