

## ALDH3A2 antibody

Cat. No. GTX17013

Host	Rabbit
Clonality	Polyclonal
Isotype	IgG
Applications	WB, ELISA
Reactivity	Human, Mouse

Package  
100 µg

## Applications

## Application Note

\*Optimal dilutions/concentrations should be determined by the researcher.

Suggested dilution	Recommended dilution
WB	1 - 2 µg/mL
ELISA	Assay dependent

Not tested in other applications.

**Calculated MW** 55 kDa. ( [Note](#) )**Product Note** At least four isoforms of Aldh3A2 are known to exist. This antibody is predicted to have no cross-reactivity to Aldh3A1.

## Properties

Form	Liquid
Buffer	PBS
Preservative	0.02% Sodium azide
Storage	Store as concentrated solution. Centrifuge briefly prior to opening vial. For short-term storage (1-2 weeks), store at 4°C. For long-term storage, aliquot and store at -20°C or below. Avoid multiple freeze-thaw cycles.
Concentration	1 mg/ml (Please refer to the vial label for the specific concentration.)
Immunogen	Aldh3A2 antibody was raised against a 14 amino acid synthetic peptide near the carboxy terminus of the human Aldh3A2. The immunogen is located within the last 50 amino acids of Aldh3A2.
Purification	Purified by antigen-affinity chromatography
Conjugation	Unconjugated

## Note

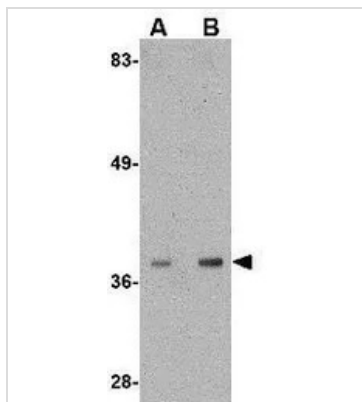
For laboratory research use only. Not for any clinical, therapeutic, or diagnostic use in humans or animals. Not for animal or human consumption.

Purchasers shall not, and agree not to enable third parties to, analyze, copy, reverse engineer or otherwise attempt to determine the structure or sequence of the product.



For full product information, images and publications, please visit our [website](#).

## DATA IMAGES



### GTX17013 WB Image

WB analysis of mouse liver tissue lysate using GTX17013 ALDH3A2 antibody.

Working concentration : (A) 1 and (B) 2  $\mu$ g/ml



For full product information, images and publications, please visit our [website](#).