

EBI3 antibody

Cat. No. GTX17030

Host	Rabbit
Clonality	Polyclonal
Isotype	IgG
Application	WB, IHC-P, ELISA
Reactivity	Human, Mouse

Package
100 µg

APPLICATION

Application Note

*Optimal dilutions/concentrations should be determined by the researcher.

Suggested dilution	Recommended dilution
WB	2 µg/mL
IHC-P	2.5 µg/mL
ELISA	Assay dependent

Not tested in other applications.

Calculated MW 25 kDa. ([Note](#))

PROPERTIES

Form	Liquid
Buffer	PBS
Preservative	0.02% Sodium azide
Storage	Store as concentrated solution. Centrifuge briefly prior to opening vial. For short-term storage (1-2 weeks), store at 4°C. For long-term storage, aliquot and store at -20°C or below. Avoid multiple freeze-thaw cycles.
Concentration	1 mg/ml (Please refer to the vial label for the specific concentration.)
Immunogen	EBI3 antibody was raised against a 16 amino acid synthetic peptide from near the carboxy terminus of human EBI3. The immunogen is located within the last 50 amino acids of EBI3.
Purification	Purified by antigen-affinity chromatography
Conjugation	Unconjugated

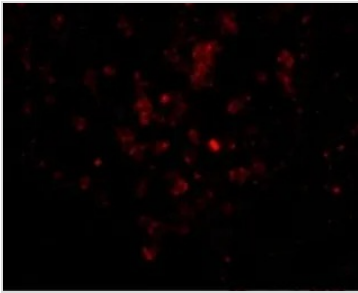
Note For laboratory research use only. Not for any clinical, therapeutic, or diagnostic use in humans or animals. Not for animal or human consumption.

Purchasers shall not, and agree not to enable third parties to, analyze, copy, reverse engineer or otherwise attempt to determine the structure or sequence of the product.



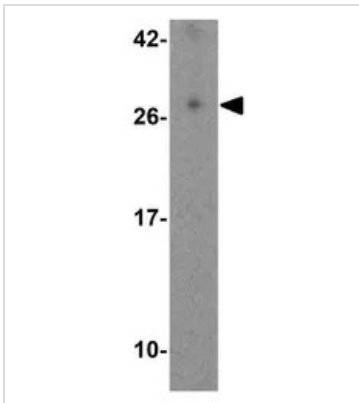
For full product information, images and publications, please visit our [website](#).

DATA IMAGES



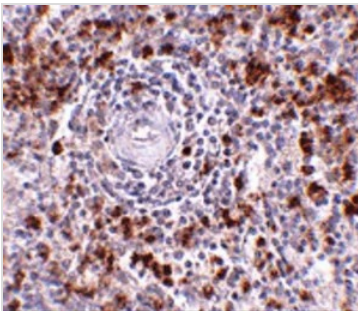
GTX17030 IHC-P Image

IHC-P analysis of human spleen tissue using GTX17030 EBI3 antibody.
Working concentration : 20 µg/ml



GTX17030 WB Image

WB analysis of human tonsil tissue lysate using GTX17030 EBI3 antibody.
Working concentration : 2 µg/ml



GTX17030 IHC-P Image

IHC-P analysis of human spleen tissue using GTX17030 EBI3 antibody.
Working concentration : 2.5 µg/ml



For full product information, images and publications, please visit our [website](#).