

Bim antibody, C-term

Cat. No. GTX17031

Host	Goat
Clonality	Polyclonal
Isotype	IgG
Applications	WB
Reactivity	Human

Package
100 µg

Applications

Application Note

*Optimal dilutions/concentrations should be determined by the researcher.

Suggested dilution	Recommended dilution
WB	0.5-2µg/ml

Not tested in other applications.

Calculated MW 22 kDa. ([Note](#))

Product Note This antibody is expected to recognise at least reported isoforms Bim-alpha1 (BimABCD), Bim-alpha2 (BimACD) and Bim-alpha3 (BimAD).

Properties

Form	Liquid
Buffer	TBS, 0.5% BSA
Preservative	0.02% Sodium azide
Storage	Store as concentrated solution. Centrifuge briefly prior to opening vial. For short-term storage (1-2 weeks), store at 4°C. For long-term storage, aliquot and store at -20°C or below. Avoid multiple freeze-thaw cycles.
Concentration	0.50 mg/ml (Please refer to the vial label for the specific concentration.)
Immunogen	Peptide with sequence C-FNAYYARRLEK, from the C Terminus of the protein sequence according to NP_619528.1; NP_619529.1; NP_996886.1;
Purification	Purified by ammonium sulphate precipitation followed by antigen affinity chromatography
Conjugation	Unconjugated

Note

For laboratory research use only. Not for any clinical, therapeutic, or diagnostic use in humans or animals. Not for animal or human consumption.

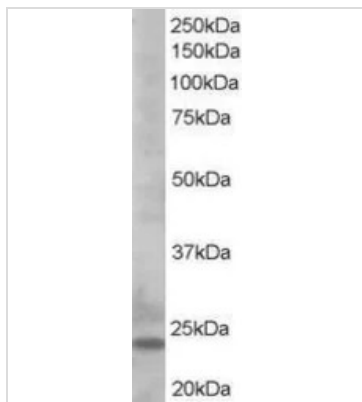
Purchasers shall not, and agree not to enable third parties to, analyze, copy, reverse engineer or otherwise attempt to determine the structure or sequence of the product.



For full product information, images and publications, please visit our [website](#).

Date 2026 / 01 / 07 Page 1 of 2

DATA IMAGES



GTX17031 WB Image

WB analysis of K562 lysate using GTX17031 Bim antibody, C-term.

Dilution : 0.5µg/ml

Loading : 35µg protein in RIPA buffer



For full product information, images and publications, please visit our [website](#).