

S100A8 + S100A9 antibody [27E10]

Cat. No. GTX17050

Host	Mouse
Clonality	Monoclonal
Isotype	IgG1
Applications	WB, ICC/IF, IHC-Fr, FCM, IP, ELISA
Reactivity	Human, Monkey

Package

50 µg

Applications

Application Note

*Optimal dilutions/concentrations should be determined by the researcher.

Suggested dilution	Recommended dilution
WB	Assay dependent
ICC/IF	Assay dependent
IHC-Fr	Assay dependent
FCM	Assay dependent
IP	Assay dependent
ELISA	Assay dependent

Note : non-reduced;~22 kDa; Doesn't recognize the single proteins S100A8 and S100A9 acetone fixation; 0.1 % hydrogen peroxide treatment to reduce endogenous peroxidase activity; positive control: inflammatory tissue; negative control: normal human tissue (skin, lung, colon).

Not tested in other applications.

Calculated MW 11 kDa. ([Note](#))

Product Note

The monoclonal antibody 27E10 recognizes an epitope specific for the S100A8/A9 heterocomplex that is not exposed on the individual subunits S100A8 (MRP8, calgranulin-A) or S100A9 (MRP14, calgranulin-B). The monoclonal antibody 27E10 can be used for early detection of inflammatory macrophages, for the characterization of tumorous tissues and the monitoring of peripheral blood cell cultures. The antibody 27E10 does not react with lymphocytes or platelets. We do not recommend use of this product for Mouse samples.

Properties

Form	Liquid
Buffer	Filter-sterilized PBS, 0.1% BSA
Preservative	0.02% Sodium azide
Storage	Store as concentrated solution. Centrifuge briefly prior to opening vial. Store at 4°C.
Concentration	100 µg/ml (Please refer to the vial label for the specific concentration.)

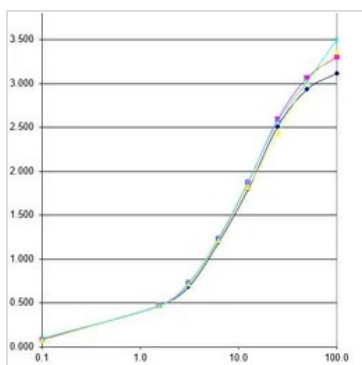


For full product information, images and publications, please visit our [website](#).

Date 2025 / 07 / 09 Page 1 of 2

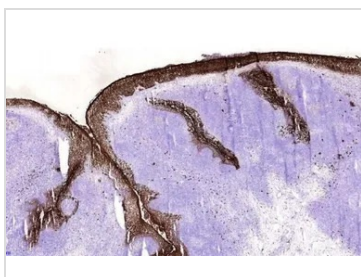
Immunogen	Human blood monocytes
Purification	Protein G purified
Conjugation	Unconjugated
Note	For laboratory research use only. Not for any clinical, therapeutic, or diagnostic use in humans or animals. Not for animal or human consumption. Purchasers shall not, and agree not to enable third parties to, analyze, copy, reverse engineer or otherwise attempt to determine the structure or sequence of the product.

DATA IMAGES



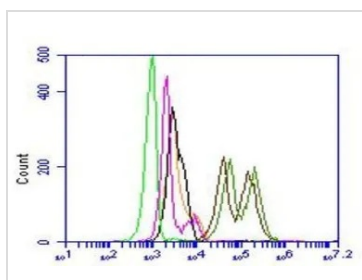
GTX17050 ELISA Image

ELISA analysis of human blood monocytes using GTX17050 S100A8 + S100A9 antibody [27E10].
Dilution : 0.5-2 µg/ml



GTX17050 IHC-Fr Image

IHC-Fr analysis of human squamous epithelia of tonsil section using GTX17050 S100A8 + S100A9 antibody [27E10].



GTX17050 FCM Image

FACS analysis of human peripheral blood mononuclear cells (PBMC) using GTX17050 S100A8 + S100A9 antibody [27E10].

Light Green and Black : Isotype control in 2 concentrations

Pink : Secondary antibody only

Dark Green and Brown line : in a concentration of 1 and 3 µl/2x10⁵ cells



For full product information, images and publications, please visit our [website](https://www.genetex.com).