

Synaptogyrin 2 antibody

Cat. No. GTX17057

| | |
|--------------|------------------|
| Host | Rabbit |
| Clonality | Polyclonal |
| Isotype | IgG |
| Applications | WB, IHC-P, ELISA |
| Reactivity | Human, Rat |

Package
100 µg

Applications

Application Note

*Optimal dilutions/concentrations should be determined by the researcher.

| Suggested dilution | Recommended dilution |
|--------------------|----------------------|
| WB | 1 - 2 µg/mL |
| IHC-P | 2.5 µg/mL |
| ELISA | Assay dependent |

Not tested in other applications.

Calculated MW 25 kDa. ([Note](#))

Properties

| | |
|---------------|--|
| Form | Liquid |
| Buffer | PBS |
| Preservative | 0.02% Sodium azide |
| Storage | Store as concentrated solution. Centrifuge briefly prior to opening vial. For short-term storage (1-2 weeks), store at 4°C. For long-term storage, aliquot and store at -20°C or below. Avoid multiple freeze-thaw cycles. |
| Concentration | 1 mg/ml (Please refer to the vial label for the specific concentration.) |
| Immunogen | Synaptogyrin 2 antibody was raised against a 17 amino acid synthetic peptide from near the amino terminus of human Synaptogyrin 2. The immunogen is located within amino acids 30 - 80 of Synaptogyrin 2. |
| Purification | Purified by antigen-affinity chromatography |
| Conjugation | Unconjugated |

Note

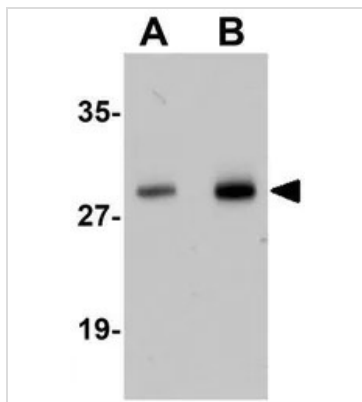
For laboratory research use only. Not for any clinical, therapeutic, or diagnostic use in humans or animals. Not for animal or human consumption.

Purchasers shall not, and agree not to enable third parties to, analyze, copy, reverse engineer or otherwise attempt to determine the structure or sequence of the product.



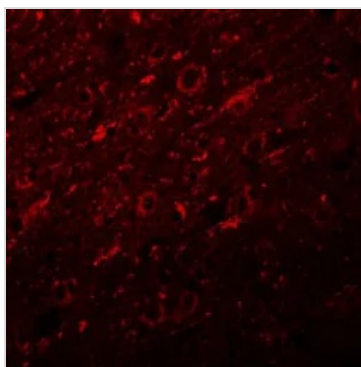
For full product information, images and publications, please visit our [website](#).

DATA IMAGES



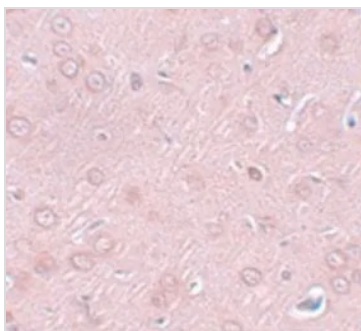
GTX17057 WB Image

WB analysis of human lung tissue lysate using GTX17057 Synaptogyrin 2 antibody.
Working concentration : (A) 1 and (B) 2 µg/ml



GTX17057 IHC-P Image

IHC-P analysis of rat brain tissue using GTX17057 Synaptogyrin 2 antibody.
Working concentration : 20 µg/ml



GTX17057 IHC-P Image

IHC-P analysis of rat brain tissue using GTX17057 Synaptogyrin 2 antibody.
Working concentration : 2.5 µg/ml



For full product information, images and publications, please visit our [website](https://www.genetex.com).