

Chromogranin A antibody

Cat. No. GTX17064

Host	Rabbit
Clonality	Polyclonal
Isotype	IgG
Applications	IHC-P
Reactivity	Human

Package
500 µl

Applications

Application Note

*Optimal dilutions/concentrations should be determined by the researcher.

Suggested dilution	Recommended dilution
IHC-P	1:50-1:100

Note : Recommendations for antigen retrieval : Citrate Buffer pH 6.0

Not tested in other applications.

Product Note This antibody does not recognize the epitopes located on the N-terminal half of the chromogranin A molecule.

Properties

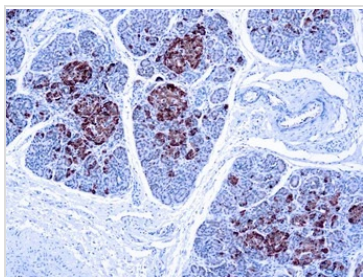
Form	Liquid
Buffer	PBS
Preservative	0.09% Sodium azide
Storage	Store as concentrated solution. Centrifuge briefly prior to opening vial. Store at 4°C.
Concentration	Batch dependent (Please refer to the vial label for the specific concentration.)
Immunogen	C-terminal half of chromogranin A was purified from urine of patients with carcinoid syndrome.
Purification	Purified IgG
Conjugation	Unconjugated

Note For laboratory research use only. Not for any clinical, therapeutic, or diagnostic use in humans or animals. Not for animal or human consumption.

Purchasers shall not, and agree not to enable third parties to, analyze, copy, reverse engineer or otherwise attempt to determine the structure or sequence of the product.



For full product information, images and publications, please visit our [website](#).

DATA IMAGES

GTX17064 IHC-P Image

IHC-P analysis of human pancreas tissue using GTX17064 Chromogranin A antibody.



For full product information, images and publications, please visit our [website](#).