

Cytokeratin 7 antibody [OV-TL 12/30] (ready-to-use)

Cat. No. GTX17069

| | |
|---------------------|------------|
| Host | Mouse |
| Clonality | Monoclonal |
| Isotype | IgG1 |
| Applications | IHC-P |
| Reactivity | Human |

Package
6 ml

Applications

Application Note

*Optimal dilutions/concentrations should be determined by the researcher.

| Suggested dilution | Recommended dilution |
|--------------------|----------------------|
| IHC-P | Assay dependent |

Note : Recommendations for antigen retrieval : Citrate Buffer pH 6.0

Not tested in other applications.

Properties

| | |
|----------------------|---|
| Form | Liquid |
| Buffer | PBS |
| Preservative | 0.09% Sodium azide |
| Storage | Store as concentrated solution. Centrifuge briefly prior to opening vial. Store at 4°C. |
| Concentration | Batch dependent (Please refer to the vial label for the specific concentration.) |
| Immunogen | BALB/C mice were immunized with ovarian carcinoma cell line, OTN11. |
| Purification | Purified IgG |
| Conjugation | Unconjugated |

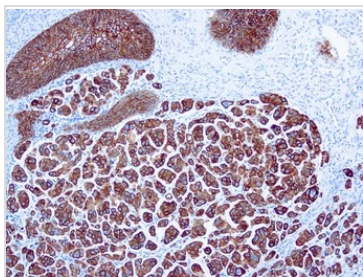
Note

For laboratory research use only. Not for any clinical, therapeutic, or diagnostic use in humans or animals. Not for animal or human consumption.

Purchasers shall not, and agree not to enable third parties to, analyze, copy, reverse engineer or otherwise attempt to determine the structure or sequence of the product.



For full product information, images and publications, please visit our [website](#).

DATA IMAGES

GTX17069 IHC-P Image

IHC-P analysis of human lung tissue using GTX17069 Cytokeratin 7 antibody [OV-TL12/30] (ready-to-use).



For full product information, images and publications, please visit our [website](#).