

SSEA-1 / CD15 antibody [MMA (LeuM1)]

Cat. No. GTX17080

Host	Mouse
Clonality	Monoclonal
Isotype	IgM
Application	IHC-P
Reactivity	Human

Package
1 ml

APPLICATION

Application Note

*Optimal dilutions/concentrations should be determined by the researcher.

Suggested dilution	Recommended dilution
IHC-P	1:50-1:100

Note : Recommendations for antigen retrieval : EDTA buffer pH 8.0 at room temperature for 30 mins.

Not tested in other applications.

PROPERTIES

Form	Liquid
Buffer	Tissue culture supernatant
Preservative	0.09% Sodium azide
Storage	Store as concentrated solution. Centrifuge briefly prior to opening vial. Store at 4°C.
Concentration	Batch dependent (Please refer to the vial label for the specific concentration.)
Immunogen	BALB/C mice were injected with U937 histiocytic cell line.
Purification	Purified IgM
Conjugation	Unconjugated

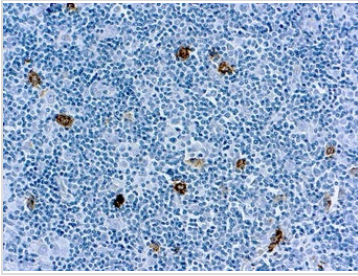
Note

For laboratory research use only. Not for any clinical, therapeutic, or diagnostic use in humans or animals. Not for animal or human consumption.

Purchasers shall not, and agree not to enable third parties to, analyze, copy, reverse engineer or otherwise attempt to determine the structure or sequence of the product.



For full product information, images and publications, please visit our [website](#).

DATA IMAGES

GTX17080 IHC-P Image

IHC-P analysis of human tonsil tissue using GTX17080 SSEA-1 / CD15 antibody [MMA (LeuM1)].



For full product information, images and publications, please visit our [website](#).