

Mouse Anti-Human IgM antibody [R1/69]

Cat. No. GTX17104

Host	Mouse
Clonality	Monoclonal
Isotype	IgG1
Applications	IHC-P
Reactivity	Human

Package
1 ml

Applications

Application Note

*Optimal dilutions/concentrations should be determined by the researcher.

Suggested dilution	Recommended dilution
IHC-P	1:25-1:50

Not tested in other applications.

Product Note

This antibody reacts with the heavy chain present in all types of human IgM. It stains B cell follicles in human lymphoid tissues.

Properties

Form	Liquid
Buffer	Ascites
Preservative	0.09% Sodium azide
Storage	Store as concentrated solution. Centrifuge briefly prior to opening vial. Store at 4°C.
Immunogen	Human lymphoid cells.
Purification	Unpurified
Conjugation	Unconjugated

Note

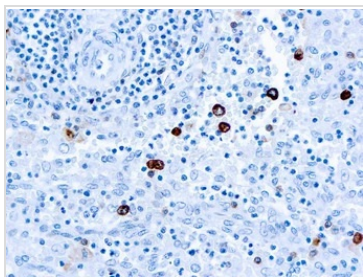
For laboratory research use only. Not for any clinical, therapeutic, or diagnostic use in humans or animals. Not for animal or human consumption.

Purchasers shall not, and agree not to enable third parties to, analyze, copy, reverse engineer or otherwise attempt to determine the structure or sequence of the product.



For full product information, images and publications, please visit our [website](#).

DATA IMAGES



GTX17104 IHC-P Image

IHC-P analysis of human tonsil tissue using GTX17104 Human IgM antibody [R1/69].



For full product information, images and publications, please visit our [website](#).